

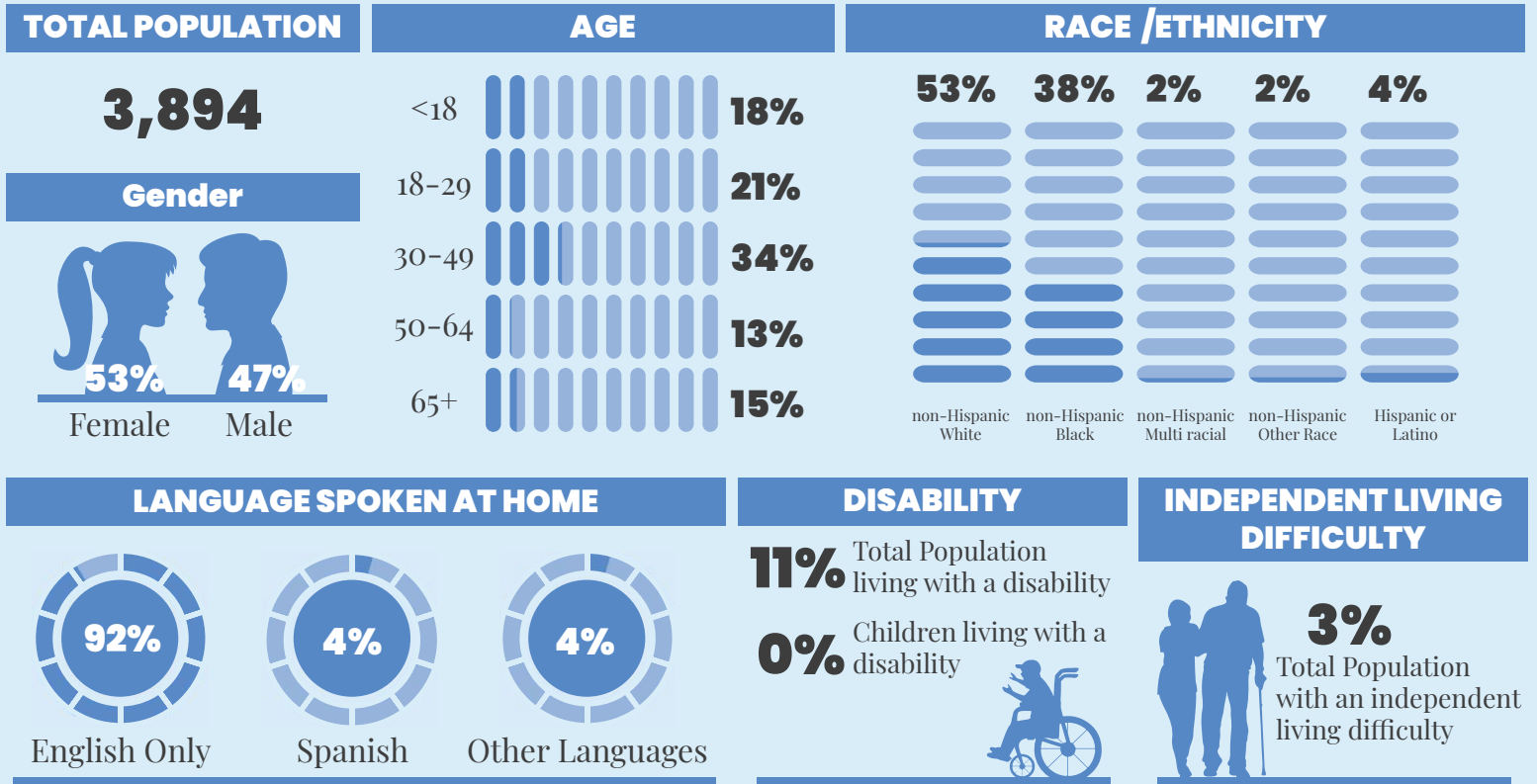
# WeTHRIVE!<sup>SM</sup> Data Profile

# WOODLAWN

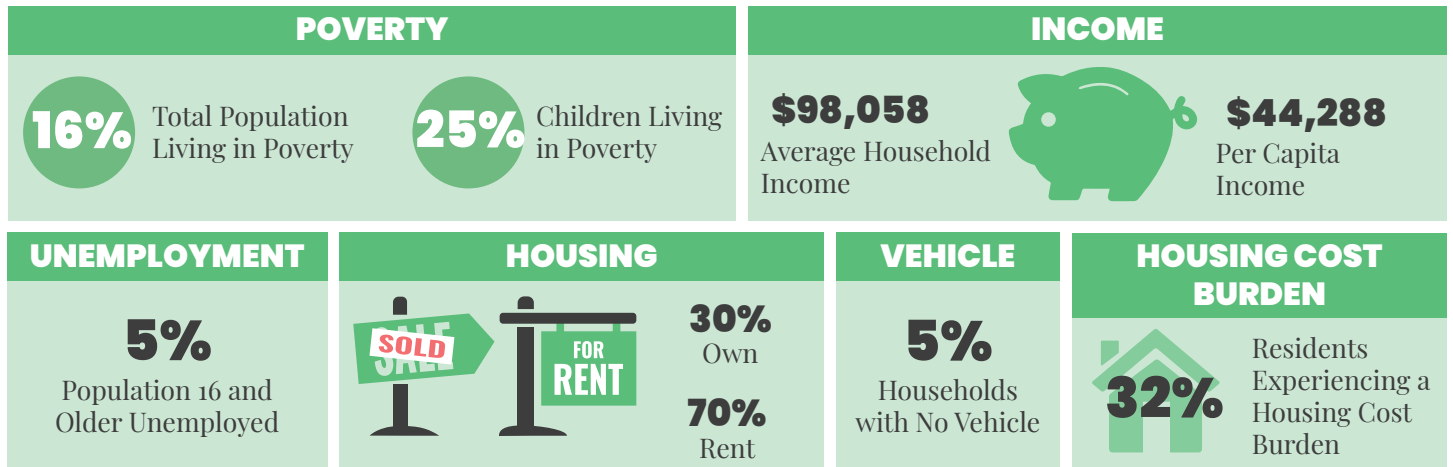
• 2026 •



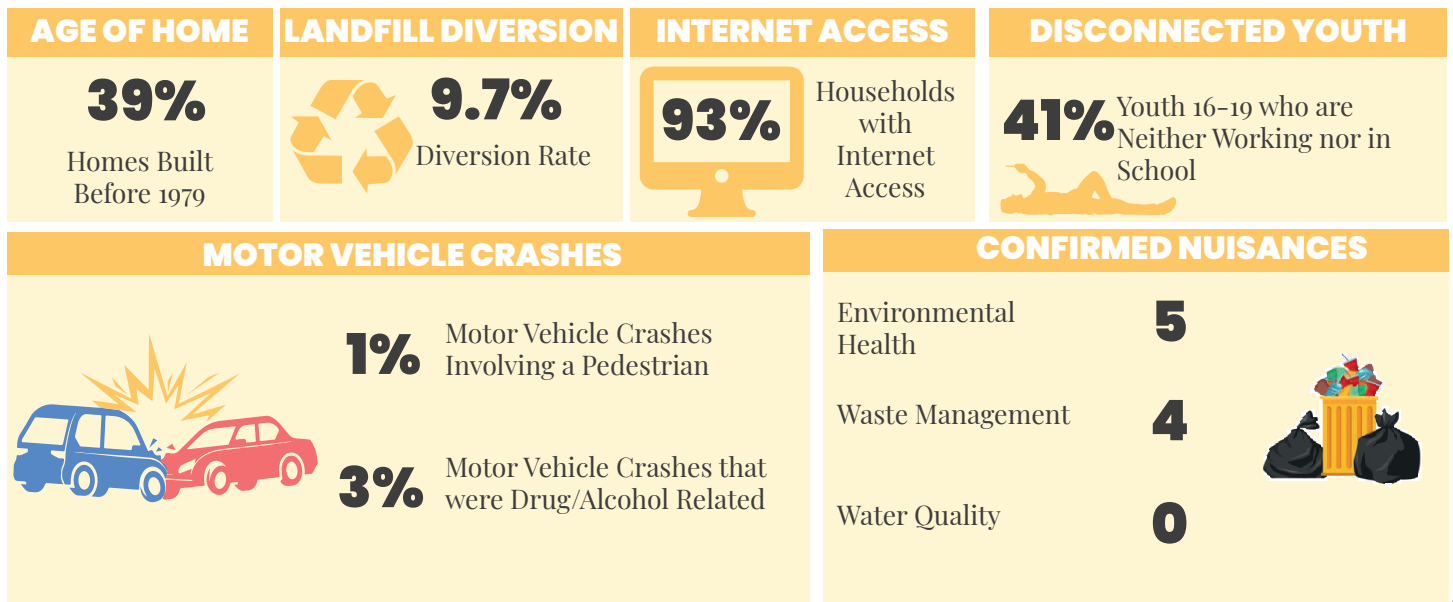
## DEMOGRAPHICS | 2024



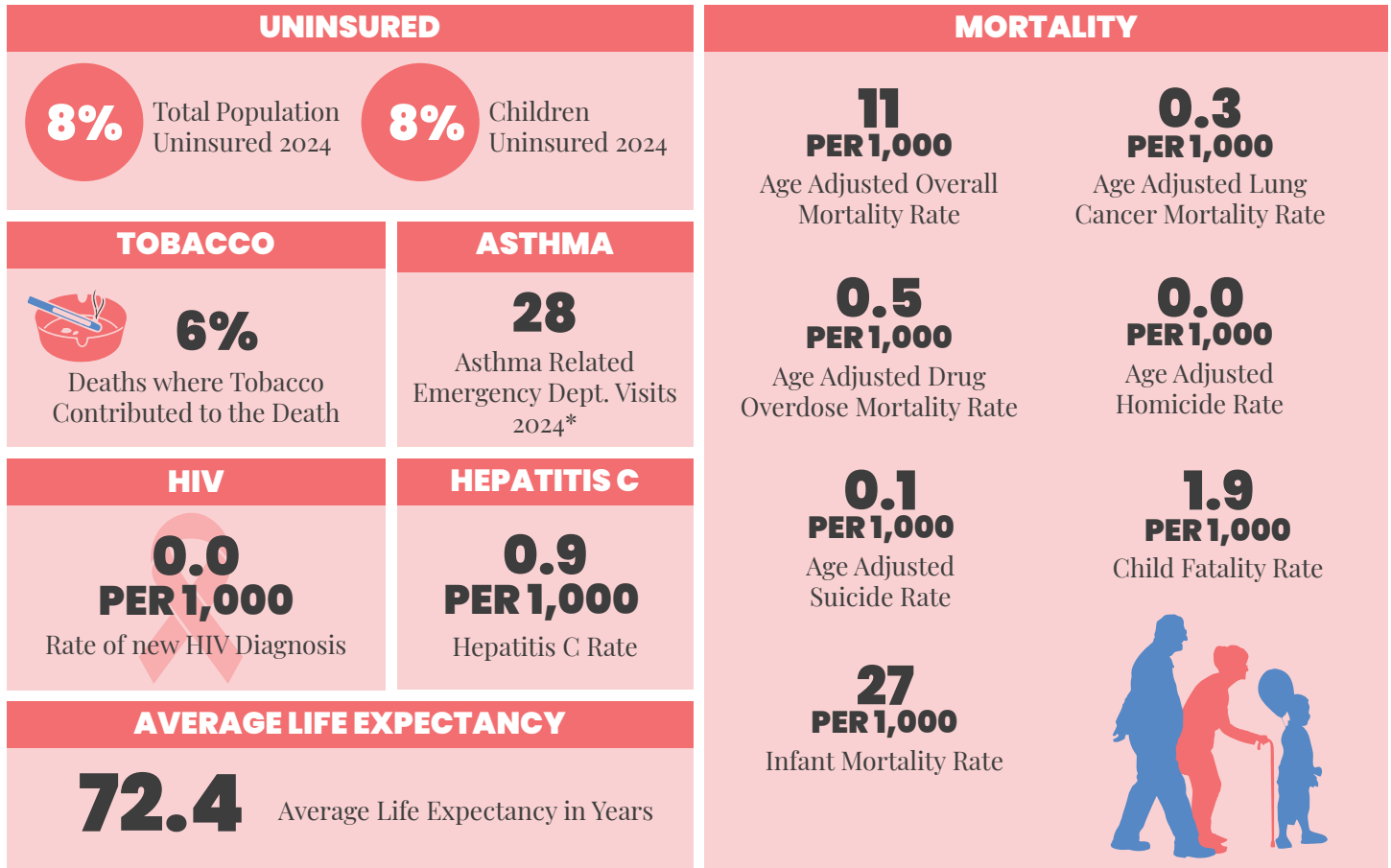
## ECONOMIC STABILITY | 2024



## NEIGHBORHOOD & BUILT ENVIRONMENT | 2024



# HEALTHCARE & HEALTH OUTCOMES | 2020-2024



\*NOTE | This is data is ZIP codes that cover Woodlawn. These ZIP codes are: 45215, 45246

## WeTHRIVE! IN WOODLAWN

In 2025, WeTHRIVE! in Woodlawn:

- Partnered with the National Alliance on Mental Illness (NAMI) and Mt. Zion Baptist Church of Woodlawn to host NAMI's Sharing Hope series.
- Hosted the Beautiful Woodlawn Garden produce pop-up day where produce grown in the garden was given away to community members.
- Laid the groundwork to partner with Freestore Foodbank to offer monthly produce pop-ups focusing on residents' preferences/needs in 2026.

The Woodlawn WeTHRIVE! team is looking forward to another year of promoting mental health awareness and encouraging healthy eating in 2026!

# We THRIVE!

*Community Wellness in Action*

## CONTACT US

WeTHRIVE!  
250 William Howard Taft Rd  
Cincinnati, Ohio 45219  
(513) 946.7800

[www.WatchUsThrive.org](http://www.WatchUsThrive.org)

## WE'RE SOCIAL!

Follow us on your favorite social media platform



**@WATCHUSTHRIVE**

Use the QR Code below for additional information about the data in this report.

