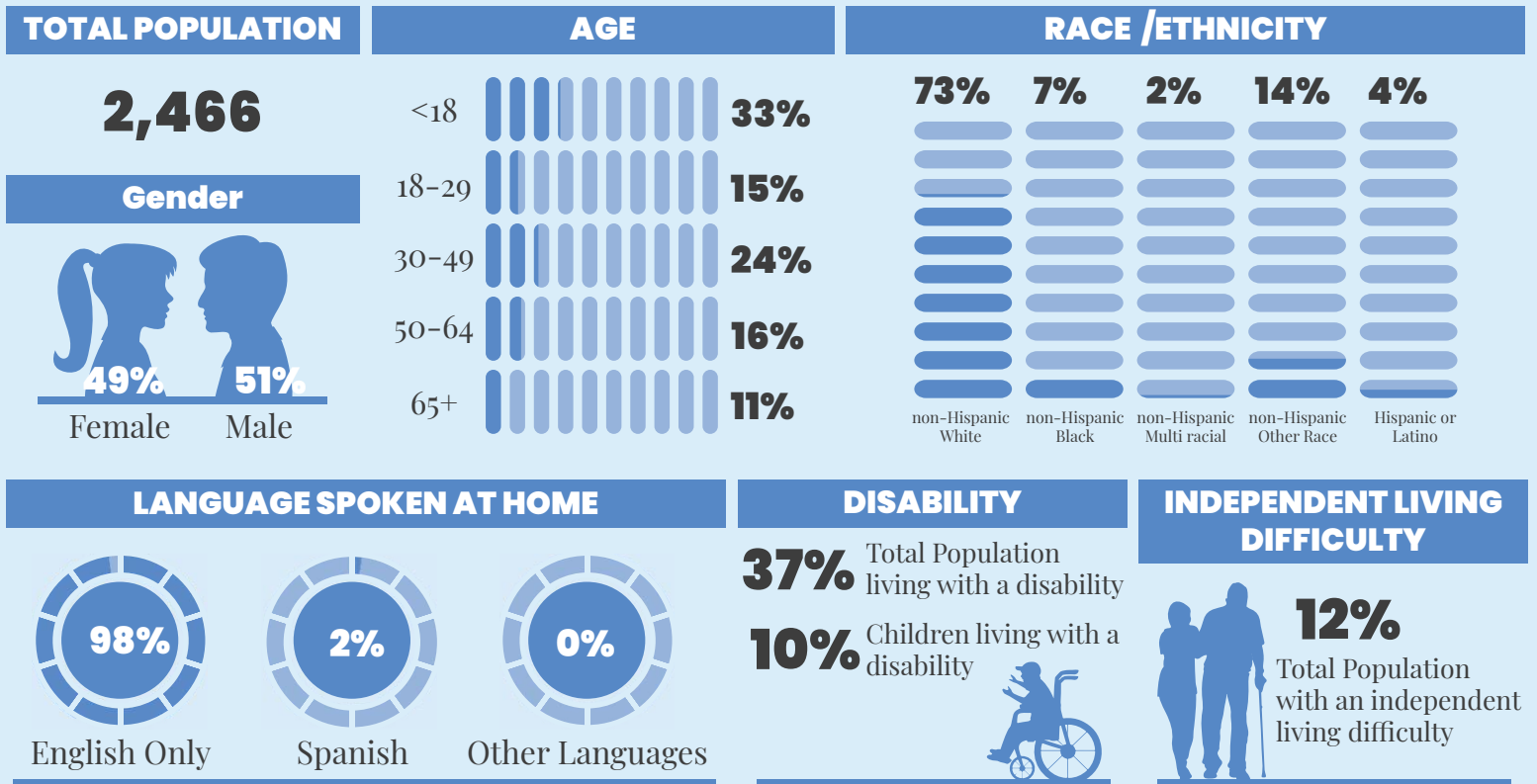


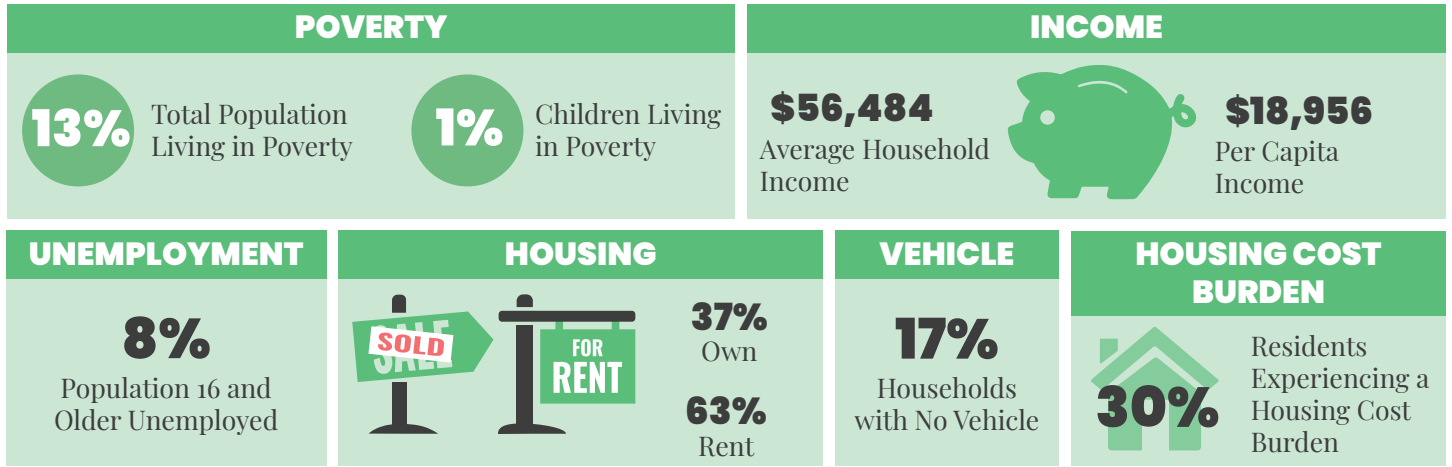
# ELMWOOD PLACE

• 2026 •

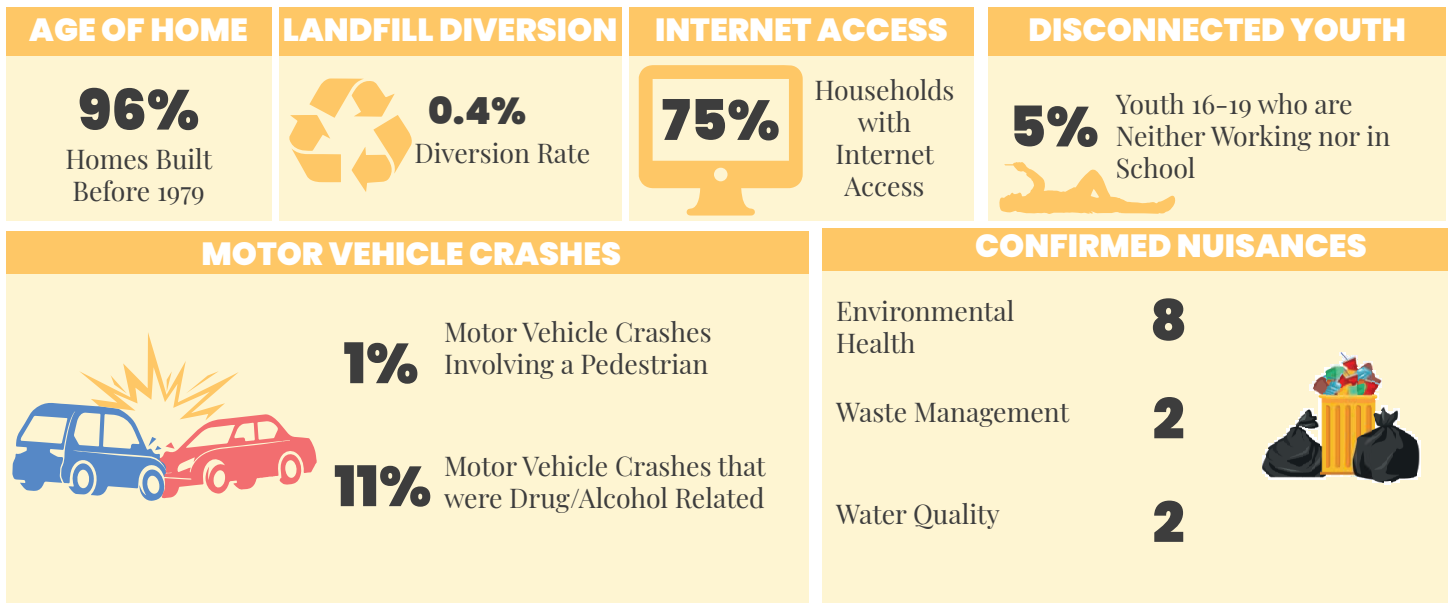
## DEMOGRAPHICS | 2024



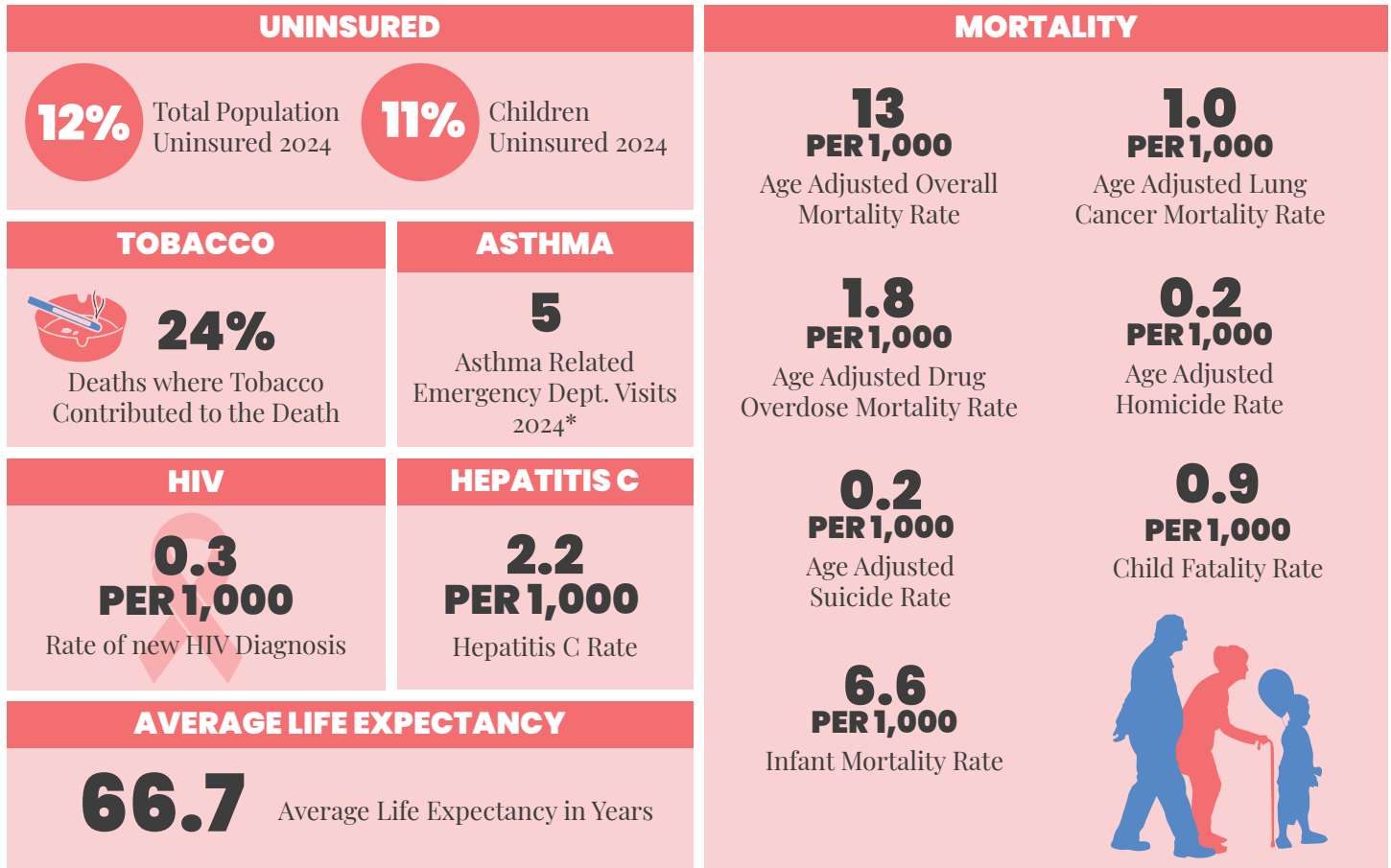
# ECONOMIC STABILITY | 2024



# NEIGHBORHOOD & BUILT ENVIRONMENT | 2024



# HEALTHCARE & HEALTH OUTCOMES | 2020-2024



\*NOTE | This data is ZIP codes that cover Elmwood Place. These ZIP codes are: 45216, 45232

## WeTHRIVE! IN ELMWOOD PLACE

In 2025, WeTHRIVE! in Elmwood Place:

- Worked on overdose prevention by having fentanyl test strips placed in the local bars.
- Hosted a modern first aid training for residents, law enforcement, and fire/EMS staff.
- Worked to increase recycling; the village was chosen as a Target Community by Hamilton County ReSource.

The Elmwood Place WeTHRIVE! team is looking forward to continuing their work and increasing healthy food access and bike safety in 2026!

# We THRIVE!

*Community Wellness in Action*

## CONTACT US

WeTHRIVE!  
250 William Howard Taft Rd  
Cincinnati, Ohio 45219  
(513) 946.7800

[www.WatchUsThrive.org](http://www.WatchUsThrive.org)

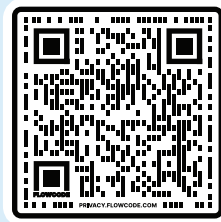
## WE'RE SOCIAL!

Follow us on your favorite social media platform



**@WATCHUSTHRIVE**

Use the QR Code below for additional information about the data in this report.



PREVENT. PROMOTE. PROTECT.

