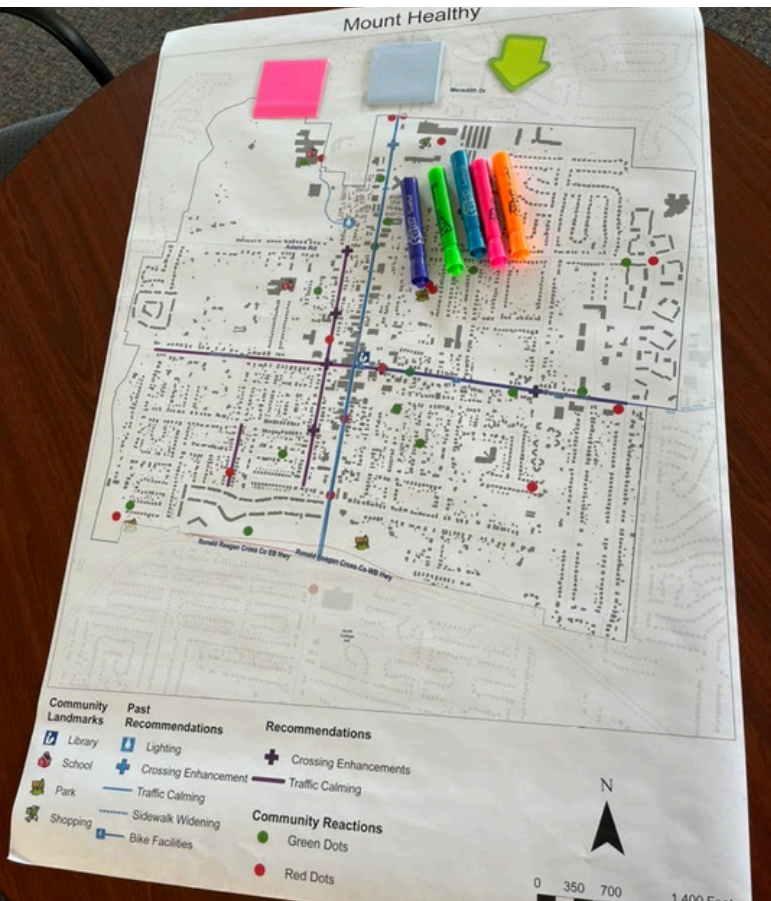
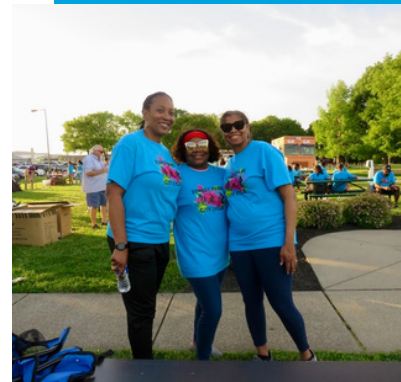


WeTHRIVE! ANNUAL REPORT

*Creating a culture of health, safety, and vitality
throughout Hamilton County.*

2024



**We
THRIVE!**
Community Wellness in Action™

AN
INITIATIVE
OF

**HAMILTON COUNTY
PUBLIC HEALTH**

PREVENT. PROMOTE. PROTECT.

ABOUT WeTHRIVE!

Since 2009, Hamilton County Public Health's WeTHRIVE!SM initiative has worked with communities and schools throughout Hamilton County to create a culture of health, safety, and vitality. Today, WeTHRIVE! impacts more than 300,000 people in 25 [communities](#) and eight [school districts](#). In 2024, the Village of Cleves and nine child care providers joined the initiative.



SUPPORT

WeTHRIVE! Population Health Specialists help start a team, offer assistance, and connect the teams to resources.



DATA

The most up-to-date public health [data](#) is shared to help determine areas of need and plan for the future.



COLLABORATION

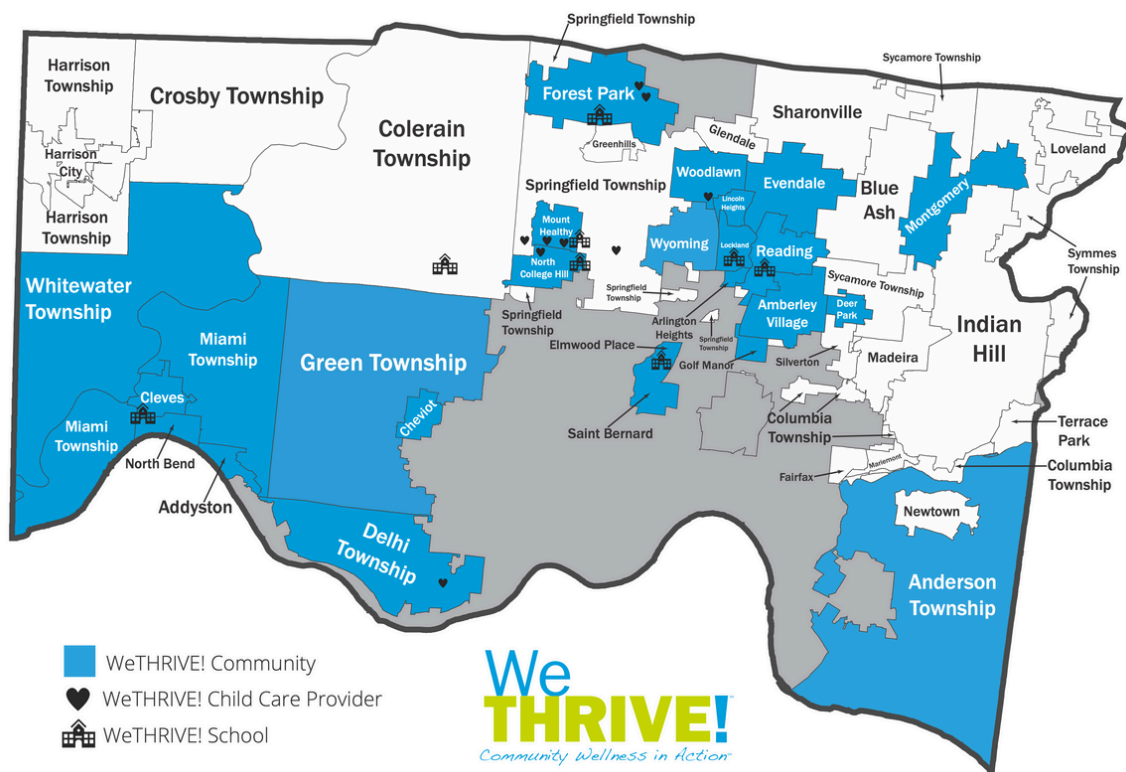
The WeTHRIVE! initiative fosters a culture of collaboration by bringing together child care providers, communities, schools, and [partner organizations](#).



RECOGNITION & CELEBRATION

The initiative is all about celebrating the positive progress and changes our amazing teams work so hard to implement!

The WeTHRIVE! initiative is a paradigm shift that engages child care providers, communities, and schools to make meaningful and sustainable policy, environmental, and infrastructure changes where people live, work, learn, and play, ensuring that all individuals have the opportunity to thrive.



2024 HIGHLIGHTS

WeTHRIVE! Celebrates 15 Years

WeTHRIVE! celebrated its 15th anniversary in 2024. The initiative started in 2009 with a focus on chronic disease prevention in three communities. Today, it has grown to 25 communities, eight school districts, and nine child care providers -- all working to create a culture of health, safety, and well-being throughout Hamilton County.



WeTHRIVE! continues to focus on policy, system, and environmental change strategies to make sustainable changes for generations to come. To highlight the impact of WeTHRIVE! over the past 15 years, we asked teams to record testimonials, which are included in our [15 year Celebration Video](#).

WeTHRIVE! Child Care Initiative

In 2024, we relaunched the WeTHRIVE! Child Care Initiative. Child care providers are uniquely positioned to help young children and families build habits that can have a lasting impact on their health. WeTHRIVE! Child Care providers partner with Hamilton County Public Health (HCPH) to identify and implement strategies to create a culture of health and wellness for the children and families they serve.

Nine child care providers joined the WeTHRIVE! family in 2024! One strategy implemented by child care providers in 2024 involved Community Supported Agriculture (CSA) boxes, bringing fresh produce directly to families. For 14 weeks, fresh produce was delivered to the child care providers for children and families to sample and take home!



REACH Funding

HCPH was awarded the Racial and Ethnic Approaches to Community Health (REACH) grant from the Centers for Disease Control and Prevention at the end of 2023 and began implementation of the grant in 2024. The REACH grant focuses on active transportation, access to healthy foods through food service guidelines and fruit and vegetable incentive programs, and early care and education.

REACH funding allows HCPH, through the WeTHRIVE! initiative, to take a deeper dive into policy and system changes related to physical activity and nutrition, increasing capacity for meaningful change throughout Hamilton County. In 2024, REACH focused on building capacity with Neighborhood Navigators, Active Transportation Plans and pop-up demonstrations, and relaunching the WeTHRIVE! Child Care Initiative.

WeTHRIVE! Champions

Our Annual Recognition Event celebrates WeTHRIVE! child care providers, communities, and schools. It's also the time when we honor the WeTHRIVE! Champion Award winners, who are nominated by their peers.

Our 2024 Champions:

[Margaret Wienholts](#), Village of Lockland

[Madison Kist](#), Mt. Healthy City Schools

[Ron Spears, Jr.](#), Elmwood Place

[Rhiana Hubbard](#), Reading Community City Schools

[ProducePerks Midwest](#)

2024 TEAMS IN ACTION

Throughout 2024, WeTHRIVE! child care providers, communities, and schools continued to show adaptability, resiliency, and the ability to think outside the box. WeTHRIVE! staff worked to expand our community and school teams, complete assessments, develop action plans, and provide support and resources to teams.

SOCIAL CONNECTION

WeTHRIVE! teams hosted programs and events that brought residents, students, school staff, and families together. These included walks, fall prevention and physical activity classes, wellness fairs, and more!



FOOD ACCESS

WeTHRIVE! teams held food distribution events and farmer's markets, distributed Community Supported Agriculture (CSA) boxes to families, and implemented sustainable food drop boxes to increase access to healthy foods for communities, schools, and child care providers.



ENVIRONMENTAL HEALTH

WeTHRIVE! communities remained eco-conscious, hosting recycling and clean-up events, nature walks, and even bringing residents together to celebrate Arbor Day and Earth Day!



MENTAL HEALTH

WeTHRIVE! community and school teams continued to offer mental health trainings and programming to residents, students, and staff, which increased social connection and fostered supportive environments.

ACTIVE TRANSPORTATION

WeTHRIVE! teams developed active transportation plans, identifying strategies that help people safely move about the community without a car. Pop-up demonstration projects showed how the identified strategies could look within the community.

2024: A CLOSER LOOK

\$1.72 million
received from grants,
in-kind support, and
other donations.

SUPPORT

264 WeTHRIVE! team meetings

133 Key champion/stakeholder meetings

46 Events attended

160 Recruitment/partnership meetings

12 New WeTHRIVE! partners

9 Family engagement strategies implemented

DATA

49

Assessments completed

Community Focus Areas
School WellSAT-3.0/School Health Index
Nutrition and Physical Activity Self-
Assessment for Child Care

24

Community Data Profiles

Were disseminated to teams with
community level demographic data
providing them with community
specific data

8

School Data Profiles

Were disseminated to teams with
school level demographic data
providing them with school district
specific data

COLLABORATION

LEARNING COLLABORATIVE

3 meetings
83 participants

Child care, community, and school
teams connect, learn, and support
each other. Topics in 2024 included
community engagement/team
recruitment, community and school
spotlights, emergency preparedness,
and harm reduction.

IMPLEMENTATION TEAM

3 meetings
58 participants

[Partner organizations](#) send
representatives to network and hear
updates about the WeTHRIVE!
initiative and the work of community
and school teams. Partners received
over \$1.1 million to support
initiatives in WeTHRIVE! communities
and schools.

SPEED NETWORKING EVENT

1 meeting
33 participants

Child care, community, and school
teams meet one-on-one with
community partners to share what
their team is working on, learn more
about the partner agency, and
identify potential opportunities to
work together.

CELEBRATION

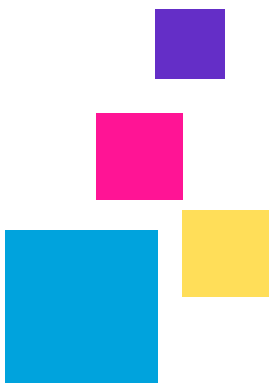
COMMUNICATIONS

- **Monthly e-Newsletter:** 12 issues to 423 individuals per month
- **Website:** 6,190 unique views
- **Social Media:** 514 posts with 46,795 impressions
- **Stories:** 17 posted on website, 2 published in Cincinnati Enquirer

ANNUAL RECOGNITION

- 24 communities recognized
- 8 school districts recognized
- 5 child care providers recognized
- 5 Champion Award winners honored





“Never doubt that a small group of thoughtful, committed citizens can change the world; indeed, it's the only thing that ever has.”

-Margaret Mead



Thank you to all of the WeTHRIVE! child care providers, communities, schools, and partner organizations for your continued dedication. WeTHRIVE! greatly appreciates the opportunity to work together to integrate health where people live, work, learn, and play. We recognize your help in creating a future where all individuals have the opportunity to thrive.

-The WeTHRIVE! Team





LEARN MORE

WatchUsTHRIVE.org

WE'RE SOCIAL

Follow us on your favorite social media platform



CONTACT

ContactWeTHRIVE@hamilton-co.org



**HAMILTON COUNTY
PUBLIC HEALTH**

PREVENT. PROMOTE. PROTECT.

