

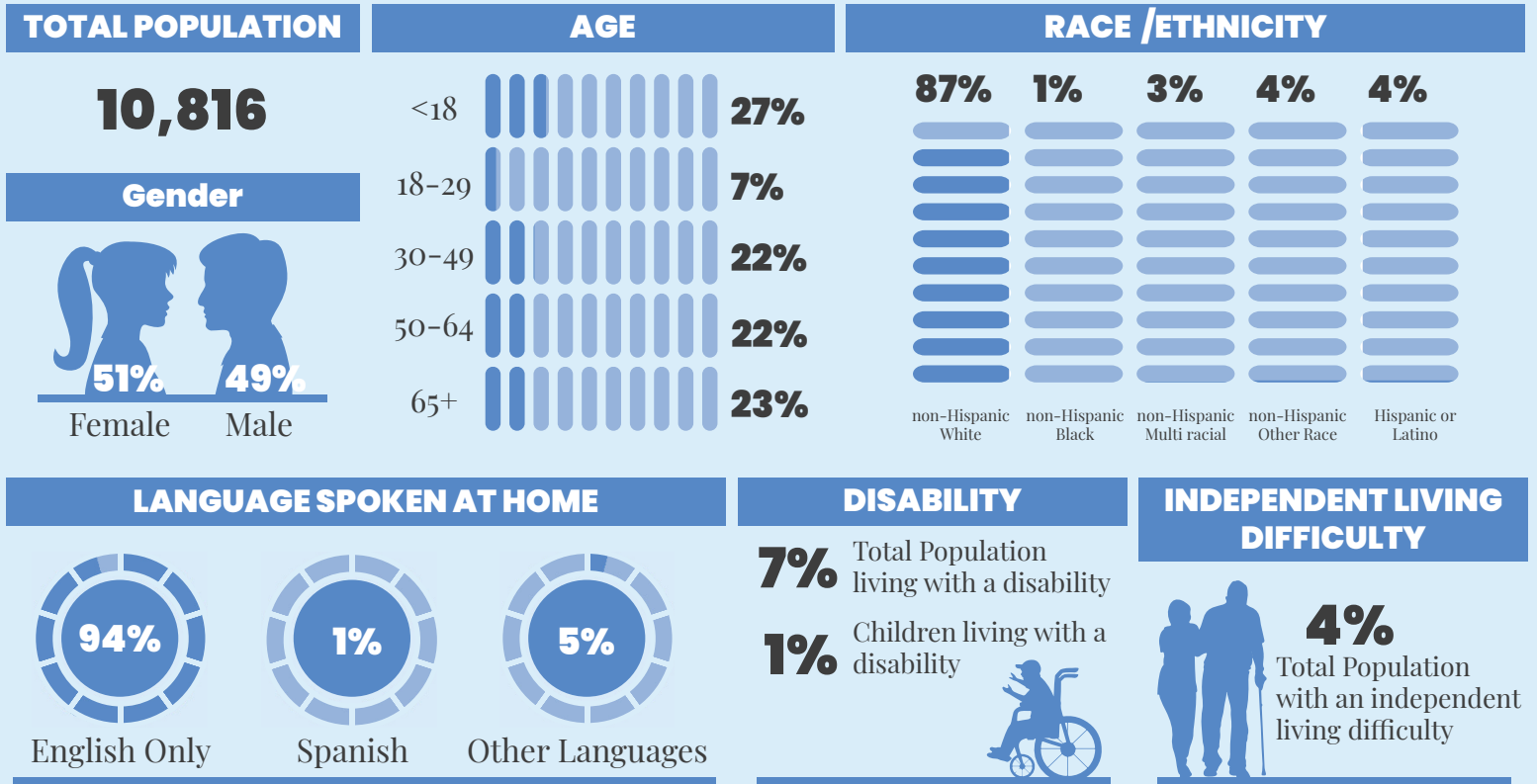
WeTHRIVE!SM Data Profile

MONTGOMERY

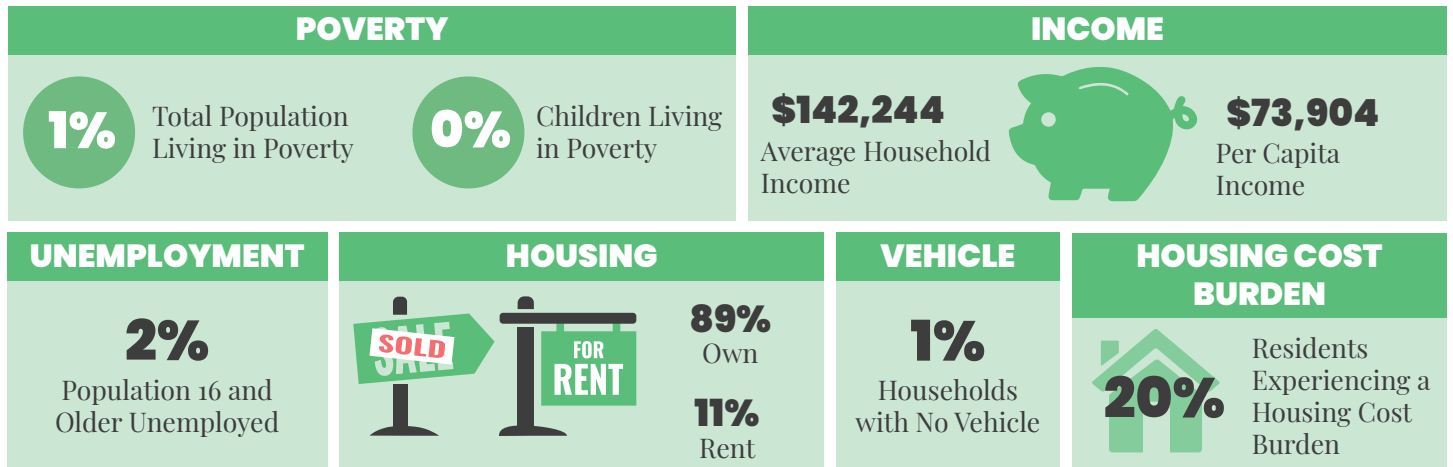
• 2024 •



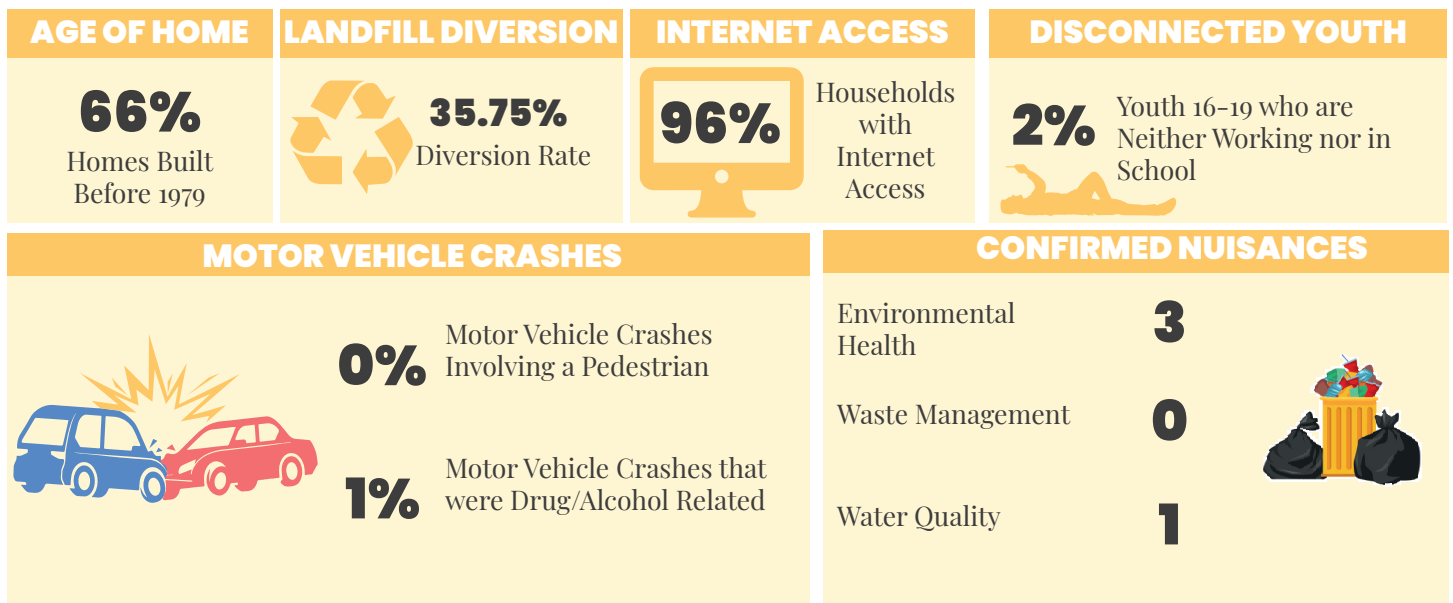
DEMOGRAPHICS | 2022



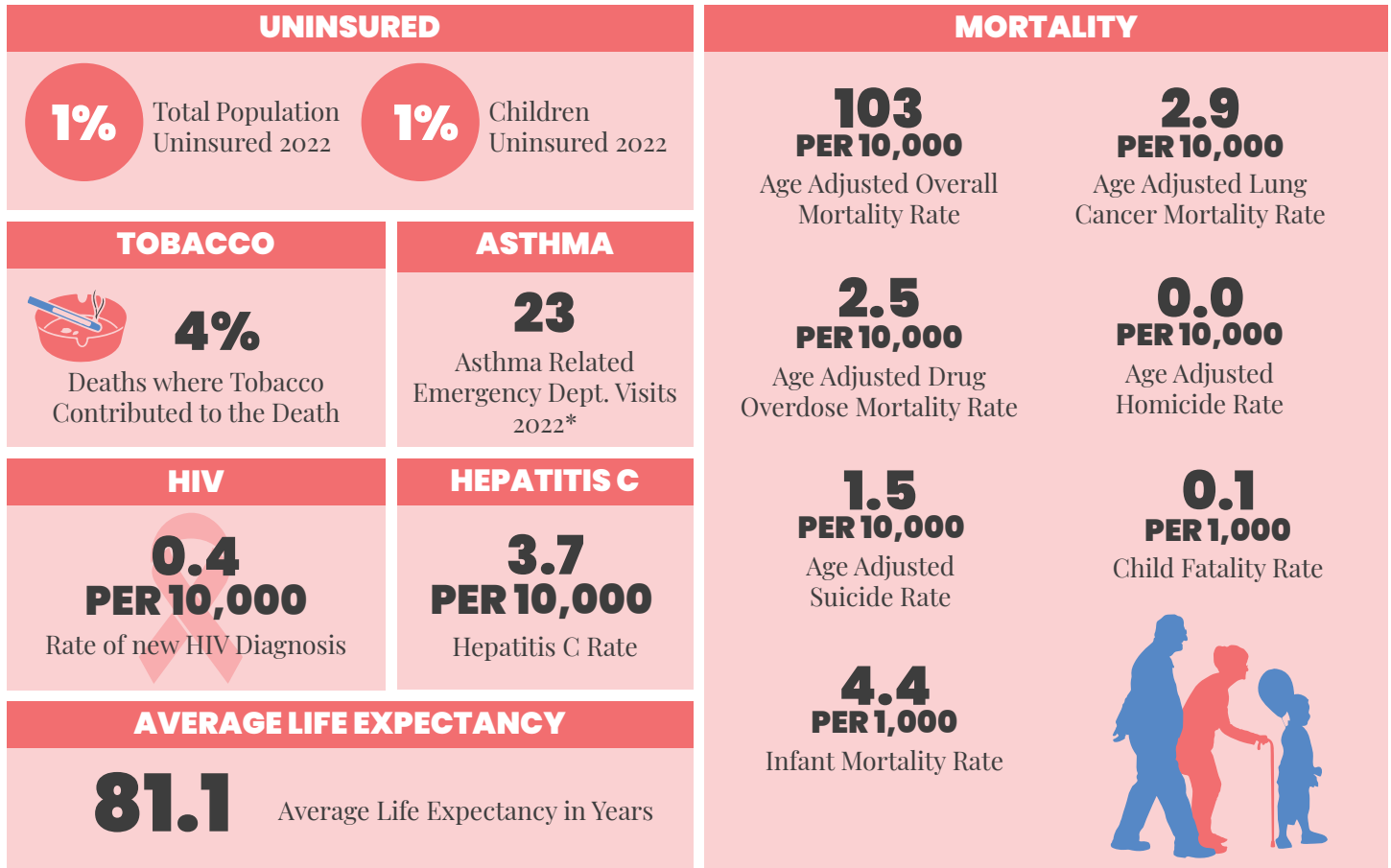
ECONOMIC STABILITY | 2022



NEIGHBORHOOD & BUILT ENVIRONMENT | 2022



HEALTHCARE & HEALTH OUTCOMES | 2018-2022



*NOTE | This is data is ZIP codes that cover Montgomery. These ZIP codes are: 45242, 45249

WeTHRIVE! IN MONTGOMERY

In 2023 WeTHRIVE! in Montgomery was recognized for year 9 as a WeTHRIVE! community.

The WeTHRIVE! in Montgomery team focused on Mental Health initiatives through:

- 7 staff mental health focused programs
- 4 community mental health programs and a three-part series on Dementia
- The WeTHRIVE! in Montgomery team also converted an ambulance into a mobile information bus that can be visited at events throughout the community

Montgomery is looking forward to continuing their mental health initiatives throughout 2024 and expanding free mental healthcare services to the community.

We THRIVE!

Community Wellness in Action

CONTACT US

WeTHRIVE!
250 William Howard Taft Rd
Cincinnati, Ohio 45219
(513) 946.7800

www.WatchUsThrive.org

WE'RE SOCIAL!

Follow us on your favorite social media platform



@WATCHUSTHRIVE

Use the QR Code below for additional information about the data in this report.

