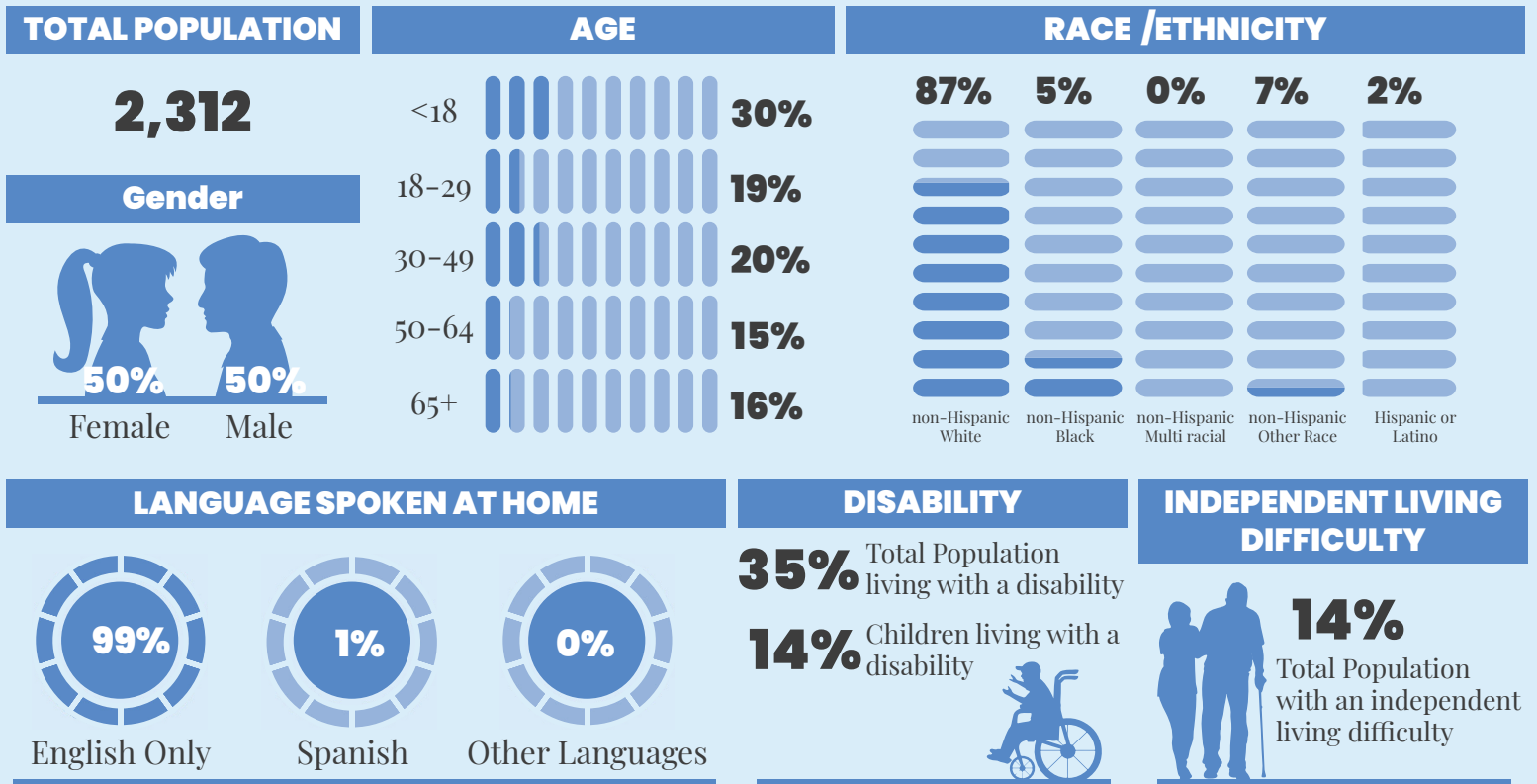


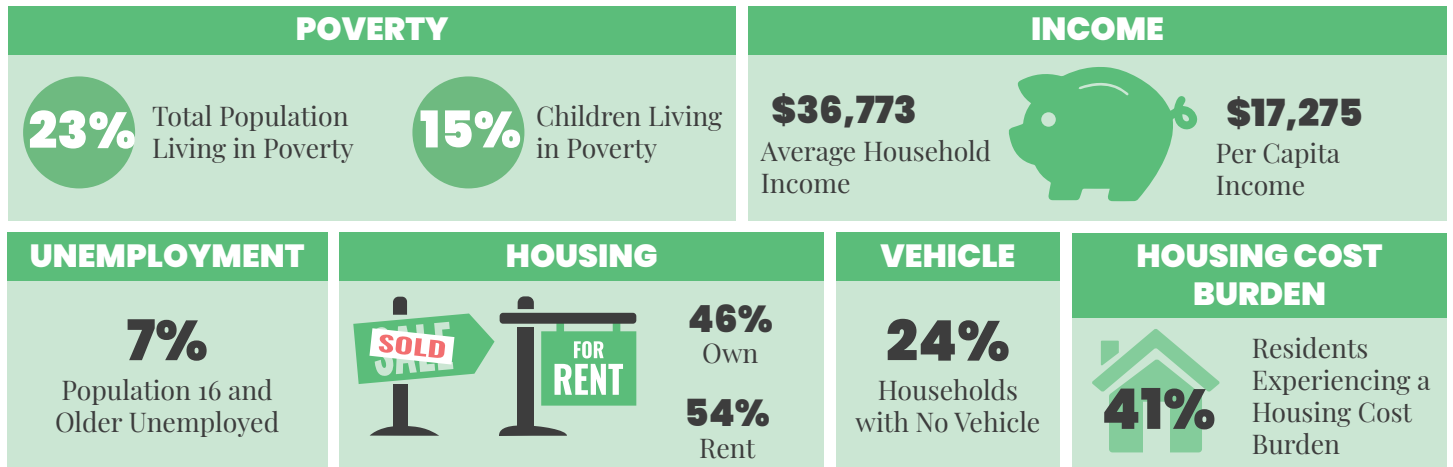
ELMWOOD PLACE

• 2024 •

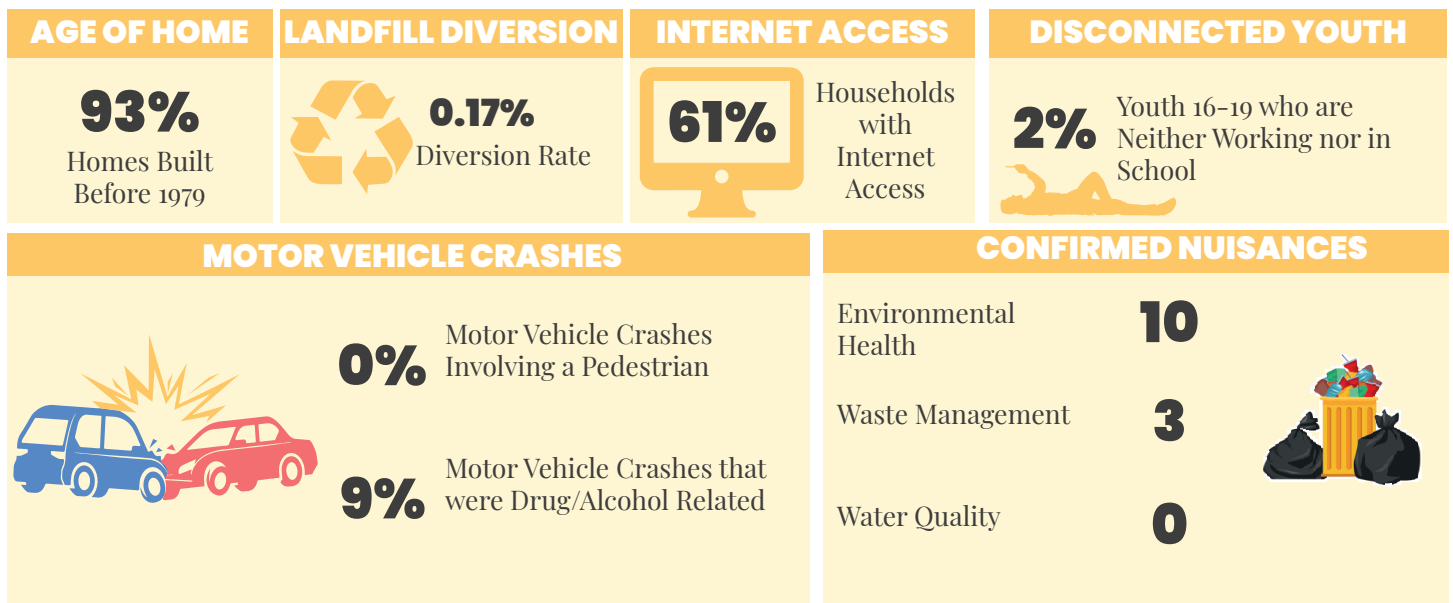
DEMOGRAPHICS | 2022



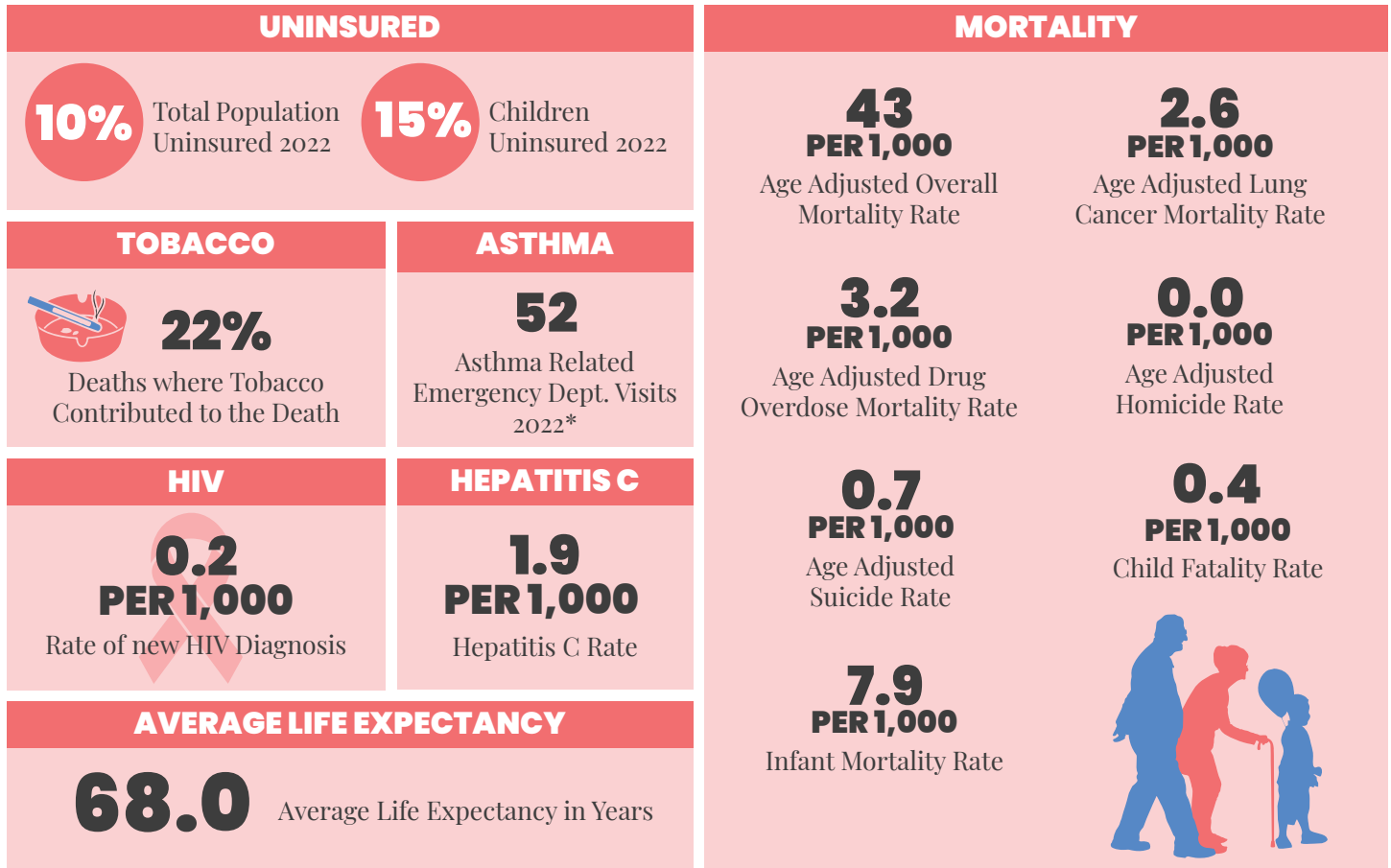
ECONOMIC STABILITY | 2022



NEIGHBORHOOD & BUILT ENVIRONMENT | 2022



HEALTHCARE & HEALTH OUTCOMES | 2018-2022



*NOTE | This data is ZIP codes that cover Elmwood Place. These ZIP codes are: 45216, 45232

WeTHRIVE! IN ELMWOOD PLACE

Elmwood Place became a WeTHRIVE! Community in 2021 and has been recognized for 3 years of active participation in the initiative.

In 2023, WeTHRIVE! in Elmwood Place:

- Focused on opportunities for residents to engage in physical activity
- Sought to increase awareness of mental health resources and destigmatize mental health issues
- Sheila Dornbusch continued to support the community as the WeTHRIVE! Neighborhood Navigator

The Elmwood Place WeTHRIVE! team is looking forward to continuing their work in 2024.

We THRIVE!

Community Wellness in Action

CONTACT US

WeTHRIVE!
250 William Howard Taft Rd
Cincinnati, Ohio 45219
(513) 946.7800

www.WatchUsThrive.org

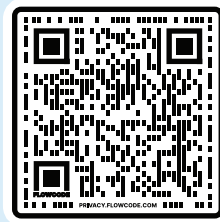
WE'RE SOCIAL!

Follow us on your favorite social media platform



@WATCHUSTHRIVE

Use the QR Code below for additional information about the data in this report.



PREVENT. PROMOTE. PROTECT.

