

CHEVIOT

Does Place Matter? A Community Health Assessment



SEPTEMBER 2023

We
THRIVE!
Community Wellness in Action™

An Initiative of

 HAMILTON COUNTY
PUBLIC HEALTH

PREVENT. PROMOTE. PROTECT.





ACKNOWLEDGMENTS

This report was prepared by Hamilton County Public Health,
Department of Community Health Services

HAMILTON COUNTY PUBLIC HEALTH STAFF

Greg Kesterman, Health Commissioner
Anne Arble, MPH, Director of Epidemiology
Sara Cannon, MPH, Senior Epidemiologist
Mary Ellen Knaebel, MPH, MCHES®, Director of Health Promotion & Education
Cristie Iwasko, MPH, CHES®, Senior Population Health Specialist
Nicole Key, MPH, CHES®, Population Health Specialist
Alex Gonzales, MPH, Population Health Specialist
Tim Frey, Population Health Specialist
Catherine Lusky, MPH, CHES® Population Health Specialist
Karen Schwamberger, Community Outreach Contractor
Mike Samet, Public Information Officer

FOR QUESTIONS REGARDING THIS REPORT CONTACT

Sara Cannon
Senior Epidemiologist
Hamilton County Public Health
513.608.0099
sara.cannon@hamilton-co.org

FOR QUESTIONS REGARDING WeTHRIVE! CONTACT

Mary Ellen Knaebel
Director of Health Promotion & Education
Hamilton County Public Health
513.946.7926
maryellen.knaebel@hamilton-co.org

SPECIAL THANKS TO CHEVIOT FOR THEIR CONTRIBUTION TO THIS REPORT.

All material in this report is in the public domain and may be used and reprinted without special permission. Citation as a source, however, is appreciated.




TABLE OF CONTENTS



Introduction.....	1
Technical Notes.....	2
Community Context	3
Educational Attainment	5
Economic Stability.....	7
Neighborhood & Built Environment.....	10
Healthcare & Health Outcomes	14
Appendices	19

INTRODUCTION

One of the basic principles of public health is that all people have a right to good health. Differences in health status - often called health inequities - are differences that are avoidable and unfair. These inequities are, in large part, driven by factors known as determinants of health, which include things such as social, economic and environmental conditions, health behaviors, disease, injury and ultimately, death.

This report includes the following topics relevant to health equity in Cheviot, Ohio:

- Community Context (who makes up your community)
- Educational Attainment (highest level of education completed)
- Economic Stability (ability to afford basic necessities)
- Neighborhood and Built Environment (the environment of your community)
- Health and Healthcare Outcomes (specific illnesses and disease)

This report provides a starting point to guide you in making lasting changes that will have a positive impact on your community for generations to come. Please read this report and then begin a conversation with community leaders about what you can do to improve the health of your community.

Understanding the problem is the first step to providing solutions. While we have a long way to go toward achieving health equity, a thorough review and subsequent understanding of the social determinants of health impacting residents can provide a road-map to better health for all, regardless of where one calls home.

TECHNICAL NOTES



GEOGRAPHY

Data in this report are presented at a community level when possible. However, there are instances in which data were not available or could not be calculated at a community level. In these cases, the data may include residents from neighboring communities who share the census tract group(s) as your community. A map that shows the census tract group(s) can be found on page I of the Appendix.

DATA SOURCES / TIME FRAMES

Data presented in this report are presented for different periods of time based on the availability of finalized datasets. Time periods are noted throughout the report. Single year estimates for U.S. Census data are not available from the U.S. Census Bureau for most sub-county jurisdictions. Therefore, the American Community Survey (ACS) five-year estimates were used for calculating certain statistics/estimates for individual years. Data in this report were obtained from the following sources:

- Federal Bureau of Investigation (FBI)
- Ohio Job and Family Services (JFS)
- Hamilton County Public Health (HCPH)
- Hamilton County Sheriff's Office
- Ohio Department of Education (ODE)
- Ohio Department of Health (ODH)
- Ohio Department of Public Safety (ODPS)
- U.S. Census Bureau/American Fact-Finder
- U.S. Department of Agriculture

Death, cancer and birth data were provided by the Ohio Department of Health. The Department specifically disclaims responsibility for any analyses, interpretations or conclusions. Hamilton County comparison data are presented in the tables at the end of this report. Additional data about your community that does not fit into one of the sections of the report are presented in the data tables. The asset and opportunity audit was completed in August of 2023.

TERMINOLOGY

For an explanation of the most common terminology used throughout this report, please refer to the common terminology sections on page XX of the Appendix.

SMALL NUMBERS

It should be noted that some data for Cheviot are based on a small number of cases and should be interpreted with caution. When there are only a small number of cases, it may be difficult to distinguish random fluctuation in disease/injury incidence from true changes in the underlying risk for the disease/injury. **Rates calculated on counts of less than 20 are particularly susceptible to this phenomenon. They have been footnoted throughout this report and are denoted by the ♦ symbol.**

While death and injury can provide a snapshot of the most severe outcomes it does not always tell the whole story. To fully understand the problem additional sources such as police, fire and EMS run data and, most importantly, the community voice should also be considered.

COMMUNITY CONTEXT



In order to understand and effectively address health and health equity problems, we have to understand the context in which the issues exist. Understanding the community context is the first, and one of the most important steps, in effectively addressing health outcomes and health equity in a community. In this report, community context covers population demographics (age, gender, race/ethnicity and language spoken at home), racial residential segregation and concentrated disadvantage.

Understanding the demographics of a community is important to program planning and program implementation¹. Understanding who makes up the population helps, not only with developing successful programs, but also in understanding the health of a community. Characteristics of a population in a community can help determine the possible impact of health patterns and disease trends over time².

8,683
Cheviot
Total Population,
2021

4,234
Male
Population,
2021

4,449
Female
Population,
2021

2021 Population by Age

	<18 Years of Age	29%
	18-29 Years of Age	12%
	30-49 Years of Age	29%
	50-64 Years of Age	18%
	65+ Years of Age	13%

Understanding and valuing cultural diversity in a community are key to countering racism and discrimination³. One important aspect of diversity is race/ethnicity. Different racial groups can have different health challenges as well as different cultural norms around healthcare. These can be important factors to consider when trying to find solutions to health challenges in a community.

2021 Population by Race/Ethnicity

non-Hispanic White	71%
non-Hispanic Black	20%
non-Hispanic Multi Racial	3%
non-Hispanic Other Race	1%
Hispanic, Any Race	4%

Language Spoken at Home, Residents 5 Years of Age & Older, 2017-2021

English Only	94.7%
Spanish	1.9%
Other Indo-European Languages	2.2%
Asian & Pacific Islander Languages	0.4%
Other Language(s)	0.8%

Language is fundamental to the expression of cultural identity³. It is important to know what languages are spoken in your community so that you can provide information in these languages when possible.

Racism and discrimination can contribute to the racial residential segregation of a community. Racial residential segregation is the degree to which two or more racial groups live separately

from one another in a geographic area⁴. Racial residential segregation was calculated using differences between non-Hispanic black and non-Hispanic white residents. Racial residential segregation can affect health outcomes in multiple ways, including constraining the socioeconomic advance of minority groups by limiting education quality and employment⁴. It also diminishes the benefits of homeownership because disadvantaged communities tend to have lower school quality, fewer job opportunities and diminished property values⁴. Racial residential segregation is also found to be associated with unequal access to healthcare resources, including the overall number and quality of healthcare settings and quality of treatment⁵.

MODERATELY SEGREGATED

The level of racial residential segregation in the majority of the census tract groups for Cheviot in 2021

Health equity and the health status of an individual are influenced by many factors. One way to look at how multiple factors may influence the health of an individual or a community is to look at the level of concentrated disadvantage in a community. Concentrated disadvantage is an indicator that shows communities that may be at an economic disadvantage. Concentrated disadvantage is calculated using five indicators:

HIGH LEVEL OF CONCENTRATED DISADVANTAGE

The level of concentrated disadvantage in Cheviot in 2021

- Percent of individuals living below the poverty line
- Percent of individuals on public assistance
- Percent of female-headed households
- Percent of the population who are unemployed
- Percent of the population who are less than 18 years of age⁵

Concentrated disadvantage is often associated with worse overall health⁵. Communities that have higher levels of concentrated disadvantage often have less mutual trust and willingness among community members to intervene for the common good. This is sometimes known as collective efficacy⁵. Collective efficacy is a critical way that communities can inhibit the perpetration of violence⁵. Children who live and grow in these disadvantaged areas are more likely to experience violence⁵. Communities with high levels of concentrated disadvantage are also at an increased risk for higher rates of infant mortality⁵.

EDUCATIONAL ATTAINMENT



Educational attainment is defined as the highest level of education that an individual has completed⁶. Educational attainment, like concentrated disadvantage, can influence

School Enrollment by Level of Schooling, 2017-2021

Total Population Enrolled in School	2,026
Enrolled in Nursery/Preschool	4%
Enrolled in Elementary & Middle School (K-8 th Grade)	56.7%
Enrolled in High School (9 th -12 th Grade)	21.9%
Enrolled in College (Undergraduate & Graduate School)	17.4%

the health of an individual. An individual's level of education can impact their health. For example, having a bachelor's degree, is often associated with having better health⁷. Educational attainment in this report is the highest

level of education completed or the highest degree earned for Cheviot residents who are 25 years of age and older.

High quality early childhood education can have significant long-term benefits for children⁸. Children who participate in established early childhood interventions, particularly low-income children, often have better educational and social outcomes⁹. Children who are enrolled in preschool programs are often more likely to continue with schooling and graduate from high school¹⁰.

ONE

The number of public school districts that serve children in Cheviot

Graduation from high school, or the equivalent, is required for any individual who seeks to

Highest Level of Educational Attainment among Cheviot Residents 25 Years of Age and Older, 2017-2021

Less than a High School Graduate	6%
High School Graduate or Equivalent	76%
Bachelor's Degree or Higher	18%

obtain a college degree. Completing college, and obtaining a higher degree, contributes to an individual's occupational status and income⁸. Increasing the educational attainment of an individual can have lasting impacts on the health of an individual over the course of his/her lifetime⁹.

Note: Percentages do not equal 100% due to other educational attainment options (e.g., associates degree) and trade school.

Increasing the graduation rate of a school may impact an individual's well-being and his/her health¹¹. The 4-year graduation rate of the public school district(s) that serves your community is monitored by the state. The 4-year graduation rate for 2021 was the percentage of students who entered ninth grade in the fall of 2017 school year and graduated by the end of the summer of 2021.

Based on the percentage of students who graduate within the 4-years, the Ohio Department of Education assigns a letter grade to each school district. To find out how the school district(s) that serves your community's children compared to other public school districts in Hamilton County, take a look at the 4-year graduation rate report card below. The school district(s) that serves your community's children are highlighted in pink.

REPORT CARD

2021 4-Year Graduation Rate

SCHOOL DISTRICT	GRADE	
Wyoming City Schools	98.8%	A
Three Rivers Local Schools	98.3%	A
Madeira City Schools	98.1%	A
Indian Hill Schools	97.5%	A
Loveland City Schools	97.5%	A
Forest Hills Local Schools	96.5%	A
Sycamore Local Schools	96.5%	A
Milford Exempted Village Schools	96.4%	A
St. Bernard- Place Schools	96.3%	A
Mariemont City Schools	96.2%	A
Deer Park City Schools	94.3%	A
Southwest Local Schools	94.2%	A
Northwest Local Schools	93.5%	A
Oak Hills Local Schools	93.1%	A
Finneytown Local Schools	92.1%	B
Princeton City Schools	89.2%	B
Winton Woods Schools	89.1%	B
Norwood City Schools	85.7%	C
North College Hill Schools	84.3%	C
Reading City Schools	83.5%	D
Lockland City Schools	81.0%	D
Cincinnati Public Schools	78.1%	F
Mount Healthy City Schools	66.8%	F

Grades are assigned by the Ohio Department of Education.

A=100.0-93.0% B=92.9-89.0% C=88.9-84.0%
 D=83.9-79.0% F=78.9-0.0%

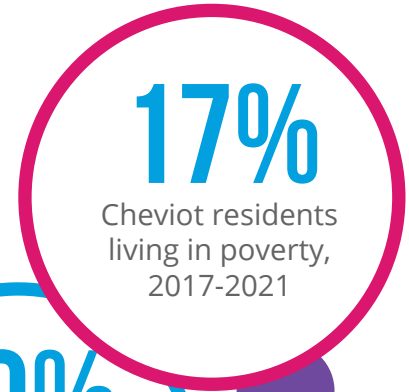
ECONOMIC STABILITY



The economic stability of individuals within a community can have a lasting impact on the overall health of that community. Economic stability means that individuals have sufficient and reliable income to pay for expenses such as healthcare¹². Economic stability can help individuals ensure better health outcomes for themselves¹³.

Living in poverty can significantly impact the health of individuals and families. Those living in poverty often have poor health, high levels of disease and disability and limited access to healthcare¹⁴. When an individual living in poverty becomes ill they can become engulfed in a downward spiral that includes loss of income and higher healthcare costs¹⁴.

Living in poverty can also greatly impact the overall health of children. Children who are living in poverty are at an increased risk for poor academic achievement, inadequate healthcare access, poor nutrition and food insecurity¹⁵.

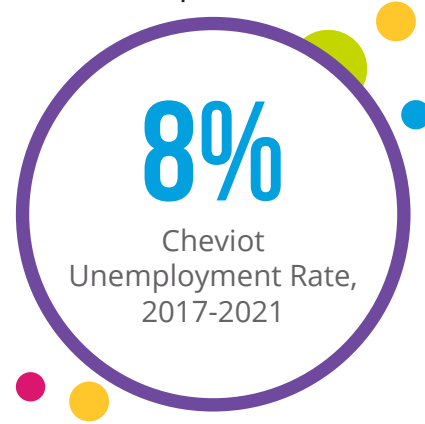


Cheviot Residents Living in Poverty by Educational Attainment, 2017-2021

Less than a High School Graduate	23%
High School Graduate or Equivalent	23%
Bachelor's Degree or Higher	0%

Note: Education level is the highest level of educational attainment an individual has completed.

A community's poverty level is also linked to high school drop-out rates. The more people who live in poverty in a community, the higher the high school drop out rate. Individuals who have less than a high school diploma have some of the highest rates of



unemployment¹⁵. Unemployment has been linked to a variety of adverse health outcomes¹⁶. This is often due to unemployment resulting in the availability of fewer resources for individuals and their families, including adequate access to healthcare¹⁶.

Employment often means more than just a steady job, a safe working environment or a paycheck. Employment can also provide numerous benefits that are critical for individuals and families to maintain proper health¹⁷. Some of these benefits include access to health insurance, the ability to afford high-quality childcare, and access to better neighborhoods.

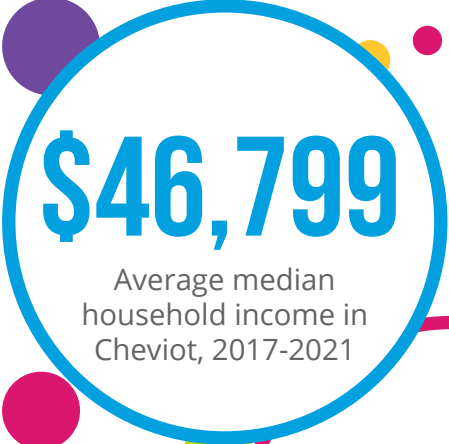
Percent of Families by Number of Parents Working, 2017-2021

Both Parents Working	46%
One Parent Working	49%
No Parent(s) Working	6%

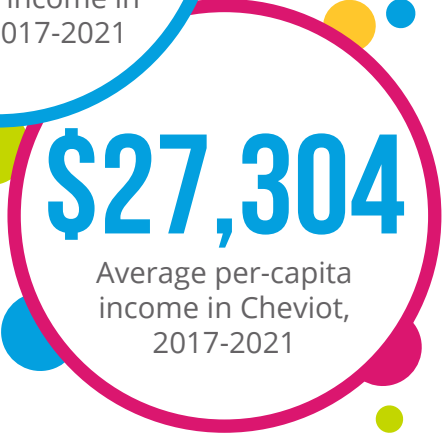
Poverty levels are not the only way to assess the economic stability of a family. Another method is to look at the number of working individuals in a household or family. Sometimes only one individual in a family works outside the home. However, many families find that they need two wage earners to pay for housing and maintain the family budget¹⁸. When both parents are working, income may increase, which may lead to fewer financial stresses or strains¹⁸.



One financial strain that a family may experience is known as housing-cost burden. Housing-cost burden is when a family or individual spends 30 percent or more of their income on housing costs¹⁹. Families and individuals who spend more than 30 percent of their income on housing costs are considered housing-cost burdened and may have difficulty affording necessities such as food, clothing, transportation and medical care²⁰.



Another way to measure economic stability of a community, is to look at the per-capita income within that community. Per-capita income, more commonly known as income per person, is the average income received in the past 12 months for every man, woman, and child²¹. Per-capita income is often used as an indicator of a community's economic health²².



Median household income, another measure of a community's economic stability, is the household income that divides the income distribution into two equal groups²³. Communities with higher median household incomes are more likely to have a higher percentage of residents with high levels of educational attainment and low unemployment rates²⁴. High employment rates can often lead to better access to healthcare and better health outcomes for the residents of a community²⁴.

Sometimes, however, a family's income may not be enough for them to afford quality child care. Quality child care enables parents to work or go to school while providing young children with the early childhood education experiences needed for healthy development²⁵.

Financial constraints on the family can limit the accessibility of child care for low income families. To help alleviate the burden this places on families, subsidized child care is available to help cover some of the cost of child care. This assistance is available for children of eligible caretakers who are working or in school²⁷. Subsidized child care is often linked to improved employment outcomes for parents and, when parents do better economically, their children do better as well²⁵.

Child Care Centers in Cheviot

Number of licensed child care centers	3
Number of licensed child care centers that serve children in publicly funded child care	3

Sometimes, however, a family's income may not be enough for them to afford the necessities. In these instances the family may qualify for cash assistance through Ohio Works First (OWF). OWF is the financial assistance portion of the State's Temporary Assistance to Needy Families (TANF) program. OWF provides cash benefits to families in need for up to 36 months²⁶. Ultimately, OWF allows for families to work towards financial stability.

Access to healthy foods is another important factor in the overall health of a community. Poor food access can increase the risk for malnutrition and other adverse health outcomes.

18%

Percent of households in Cheviot receiving cash assistance or SNAP, 2017-2021

5

Stores in Cheviot that accept SNAP as a form of payment, 2021

The ability to afford healthy foods is another common financial strain for families. To help low income families and individuals, the U.S. Department of Agriculture administers the Supplemental Nutrition Assistance Program (SNAP), which was formerly known as the Food Stamp Program. This program is meant to supplement the food budgets of low income families to help them feed their families.

Food access is also important for children's health. One way to ensure children have enough to eat is through participation in the National School Lunch and Breakfast Program. The National School Lunch and Breakfast Program is a federally assisted meal program that can operate in public and nonprofit private schools and residential child care institutions to provide nutritionally-balanced, low-cost or free breakfasts and lunches to children each school day²⁸. For many children living in poverty, most of their meals are eaten at school. When a school participates in the National School Lunch and Breakfast Program, the children in those institutions get healthy, low cost meals every school day.

67.2%

Percent of students in the Cincinnati Public School District that had free & reduced lunches, 2022 Fiscal School Year

NEIGHBORHOOD & BUILT ENVIRONMENT



The built environment is the man-made space where individuals live, work and play on a day-to-day basis. This includes buildings, parks, sidewalks, streets, and other spaces that have been created or modified²⁹. The built environment of a community also includes public transportation. It can affect the

potential for injuries related to pedestrian and motor vehicle crashes and impact the ability of individuals in a community to exercise^{29,30}.

Motor vehicle crashes are a leading cause of death in the United States³¹. Motor vehicle crashes, particularly those that involved pedestrians, are a significant public health concern. They can happen to anyone, but new teen drivers are at a higher risk for causing motor vehicle crashes

than the general population³¹. Injuries due to motor vehicle crashes are also a leading cause of death among children in the United States³².

Elements of the built environment including roads, bike infrastructure and sidewalks have a strong influence on motor vehicle, bicycle and pedestrian safety.

Parks and Playgrounds in Cheviot

Number of parks	3
Number of playgrounds	2

There is
AVAILABLE
public transportation
in Cheviot

983

Number of motor vehicle crashes in Cheviot 2018-2022

2%

Percent of motor vehicle crashes in Cheviot that were fatal, 2018-2022

10%

Percent of motor vehicle crashes in Cheviot involving a teen driver (15-17 years), 2018-2022

1,081.1
PER 100,000

Age-adjusted motor vehicle crash injury rate in Cheviot, 2010-2014

2%

Percent of motor vehicle crashes in Cheviot involving a pedestrian, 2018-2022

8%

Percent of motor vehicle crashes in Cheviot that involved a child as a driver/passenger/ pedestrian, 2018-2022

67.4
PER 100,000

Age-adjusted pedestrian injury rate in Cheviot, 2010-2014

Pedestrian injuries are injuries where a person not in a vehicle or riding a bicycle or motorcycle was struck by a car, truck, SUV, or van³³. Environmental features at intersections and crosswalks can have an impact on pedestrian-related injuries and motor vehicle crashes that involve a pedestrian³⁴. The infrastructure of roads in a community can also be associated with pedestrian related injuries and motor vehicle crashes³⁵.

The built environment can also impact the rate of motor vehicle crashes that involve bicyclists. Bicycle related injuries are injuries in which an individual riding a bicycle collided, lost control or crashed into either a moving vehicle or a pedestrian³³.

When communities provide facilities such as sidewalks, crosswalks and bike lanes, it gives residents the ability to choose how they want to travel³⁴. Not installing these types of facilities can force residents to either drive or engage in unsafe walking and biking practices³⁴.

1%

Percent of motor vehicle crashes in Cheviot involving a bicyclist, 2018-2022

128.5
PER 100,000

Age-adjusted bicycle injury rate in Cheviot, 2010-2014

23

Violent crimes in Cheviot in 2019

The built environment can also influence the crime committed in a community. Zoning, street design, housing, location of public transit and land use all shape the built environment in ways that can increase or decrease crime³⁵. Communities that have high levels of violent crime may also increase the risk that residents experience violence³⁶. Violent crime is composed of four offenses:

- Homicide
- Rape
- Robbery
- Assault

43.7
PER 100,000

Age-adjusted firearm related injury rate in Cheviot, 2010-2014

Homicides, also known as murders, are a serious health problem and can have lasting effects on communities. Homicide is an extreme outcome of the broader public health problem of interpersonal violence³⁸.

Violence is enabled by the built environment by promoting feelings of alienation and isolation or by sending signals to potentially violent individuals that their actions will not be observed³⁹.

12.6
PER 100,000

Age-adjusted homicide rate in Cheviot, 2018-2022

21.9
PER 100,000

Age-adjusted intentional injury mortality rate in Cheviot, 2018-2022

21.0
PER 100,000

Age-adjusted intentional injury rate in Cheviot, 2010-2014

Intentional injury is another form of interpersonal violence. Intentional injuries are injuries sustained by knowingly inflicting harm to oneself or someone else.

Factors associated with the built environment, including neighborhood deterioration, can also influence drug use and drug overdoses⁴⁰.

A community with deteriorating neighborhoods can lack empowerment and collective efficacy, a critical way that communities inhibit the perpetration of violence^{40,5}. Residents who are living in a deteriorating built environment may experience an increase in psychological distress which may encourage an increase in risk taking and more dangerous drug abuse activity⁴⁰.

A high quality environment is essential for children to achieve optimal health and development⁴¹. The quality of the built environment in which children live can cause or prevent illness, disability and injury⁴¹.

Sports-related injuries are more common in children in Hamilton County than in older adults⁴². Sports-related injuries are injuries that occur during exercise

9.3
PER 100,000

Age-adjusted suicide mortality rate in Cheviot, 2018-2022

77.0
PER 100,000

Age-adjusted drug overdose mortality rate in Cheviot, 2018-2022

1%

Percent of motor vehicle crashes in Cheviot that were drug related, 2018-2022

440.8
PER 100,000

Age-adjusted drug overdose related injury rate in Cheviot, 2010-2014

4%

Percent of motor vehicle crashes in Cheviot that were alcohol related, 2018-2022

or sports and often result from accidents, poor training practices, insufficient warm-up and stretching, lack of conditioning or improper equipment⁴³.

Children are not only more likely to experience sports-related injuries than adults, but they are also the most common victims of dog bites and are more likely to be severely injured by a dog bite⁴⁴. Most of the time individuals who suffer

5.1
PER 1,000

Child sports-related injury rate in Cheviot, 2010-2014

86.1
PER 1,000

Child injury rate in Cheviot, 2010-2014



17
PER 1,000

Child dog bite-related injury rate in Cheviot, 2010-2014

dog bites are bitten by their own dog or by a dog they know, such as a dog owned by a neighbor or family friend⁴⁵.

All dog bites, both large and small, are a public health concern. Approximately one in five dog bite victims require medical attention. While the most severe bites may require treatment and will get reported, many more bites go unreported and untreated every year.

The built environment can also directly impact the number of falls a community experiences each year. Fall-related injuries can happen to people of all ages within a community. Young children often experience fall-related injuries while playing or participating in physical activities. For older adults, improper home environments and decreased physical well-being, contribute to the overall risk of experiencing a fall-related injury.

“The built environment embraces a wide range of concepts, from the design and integrity of housing, to land-use and urban planning⁴¹.” The built environment of a community significantly affects the health of its residents. Advocates can help shape the design of communities in ways that improve the health of its residents.



3,681.1
PER 100,000

Age-adjusted fall-related injury rate in Cheviot, 2010-2014



5.3
PER 100,000

Age-adjusted fall-related mortality rate in Cheviot, 2018-2022

HEALTHCARE & HEALTH OUTCOMES



ACCESS TO CARE

Access to comprehensive, quality healthcare services is important to increase the quality of life for everyone⁴⁵. However, individuals may be unable to afford or unable to obtain health insurance, causing them to become uninsured. When an individual is uninsured they may put off preventative care and other necessary healthcare⁴⁶. Delaying or forgoing healthcare places individuals at increased risk for being hospitalized for health conditions that could have been avoided or prevented⁴⁶. Being uninsured can also negatively affect the health and well-being of children.

Cheviot Residents Uninsured, 2017-2021

Total residents	8%
Children (<18 years of age)	4%

Children who are uninsured may be prevented from receiving early preventative care or necessary immunizations that provide a foundation for a healthy childhood and a healthy life as an adult.

MORTALITY

Mortality rates, also known as death rates, are a powerful measure for assessing the overall health of a community. They provide a snapshot of health problems, identify potential patterns of risk within a community and show trends in death over time⁴⁷. Mortality rates also provide the opportunity to identify areas where premature death could have been prevented⁴⁷.

Cheviot Mortality Rates, 2018-2022

Age Adjusted Mortality Rate	1,023.9 PER 100,000
Child Fatality Rate	8.1 [†] PER 10,000

Another indicator to measure the overall health of a community is the child fatality rate. The child fatality rate is a specific type of mortality rate that measures the number of child deaths over a specific time

frame. The child fatality rate is the number of child deaths per 100 child residents.

While the overall mortality rate provides a glimpse into the overall health of a community, mortality rates for specific diseases and injuries provide more insight into the specific health problems of a community.

CHRONIC OBSTRUCTIVE PULMONARY DISEASE (COPD)

Chronic obstructive pulmonary disease, or COPD, refers to a group of diseases that cause airflow blockage and breathing-related problems. This includes emphysema, chronic bronchitis and, in some cases, asthma⁴⁸. COPD is the third leading cause of death in the United States. More than 11 million people have been diagnosed with COPD, and an estimated 24 million people may have the disease without even knowing it⁴⁹.

HEART DISEASE

Like COPD, heart disease may cause death when left untreated. Heart disease is the general term that refers to several types of heart conditions. The most common type of heart disease in the United States is coronary artery disease, which can cause heart attacks and heart failure⁵⁰. Heart disease has multiple causes, including diabetes⁵¹.

DIABETES

Diabetes, the seventh leading cause of death in the United States, is a disease that causes the blood glucose (sugar) levels in the body to be higher than normal⁵¹. High blood glucose is caused when your body is not able to break down the sugar or cannot make insulin, the substance that is used to break down the sugars⁵¹.

CANCER

The second leading cause of death in the United States is cancer. Cancer is the name given to over 100 different diseases⁵³. While there are many different types of cancer, all cancers start the same way and, when left untreated, can cause illness and even death⁵³. However, many cancer deaths can be prevented⁵².

Cancer is a complex group of diseases with many possible causes, however, lifestyle factors including physical activity or tobacco use can increase your risk of developing certain cancers⁵⁴. The majority of lung cancers are caused by smoking cigarettes⁵⁵. Smoking can also increase your risk of developing cancer almost anywhere in the body, including the liver, colon and rectum and the mouth (often referred to as oral cancer)⁵⁵.

Heavy alcohol drinking can also increase the risk an individual has for developing cancer⁵⁶. Long-term alcohol use has been linked to an increased risk for liver cancer⁵⁶. Regular, heavy alcohol use can damage the liver, leading to inflammation, which can increase the risk for liver cancer⁵⁶.

42.5
PER 100,000

Age-adjusted COPD mortality rate in Cheviot, 2018-2022

223.5
PER 100,000

Age-adjusted heart disease mortality rate in Cheviot, 2018-2022

28.6
PER 100,000

Age-adjusted diabetes mortality rate in Cheviot, 2018-2022

164.0
PER 100,000

Age-adjusted cancer mortality rate in Cheviot, 2018-2022

Cheviot Selected Cancer Rates

13.7 PER 100,000
Age-adjusted female breast cancer mortality rate in Cheviot, 2018-2022

71.0 PER 100,000
Age-adjusted female breast cancer incidence rate in Cheviot, 2018-2022

3.9 PER 100,000
Age-adjusted oral cancer mortality rate in Cheviot, 2018-2022

18.6 PER 100,000
Age-adjusted oral cancer incidence rate in Cheviot, 2018-2022

53.4 PER 100,000
Age-adjusted lung cancer mortality rate in Cheviot, 2018-2022

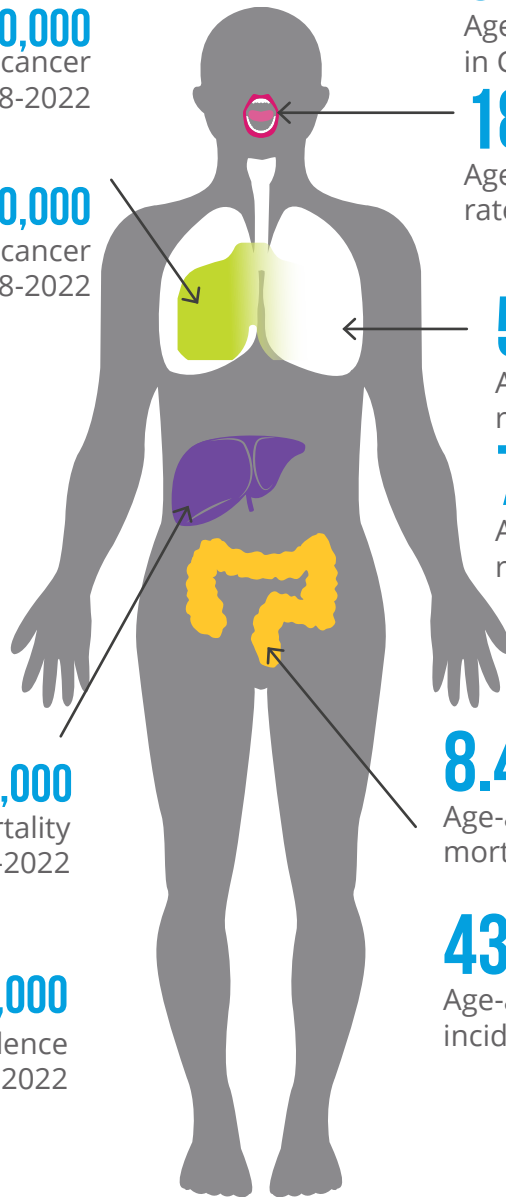
77.6 PER 100,000
Age-adjusted lung cancer incidence rate in Cheviot, 2018-2022

3.5 PER 100,000
Age-adjusted liver cancer mortality rate in Cheviot, 2018-2022

12.3 PER 100,000
Age-adjusted liver cancer incidence rate in Cheviot, 2018-2022

8.4 PER 100,000
Age-adjusted colon & rectal cancer mortality rate in Cheviot, 2018-2022

43.9 PER 100,000
Age-adjusted colon & rectal cancer incidence rate in Cheviot, 2018-2022



Some types of cancer can run in families. Having a family history of certain types of cancer, such as breast cancer, can put an individual at an increased risk for developing those cancers. However, most cancers are not directly linked to the genes we inherit from our parents^{54,57}.

While cancer is a serious health issue, many new cancers can be avoided and many cancer deaths can be prevented⁵⁸. Early and regular screenings for certain types of cancer including cervical, colorectal and breast cancers can help prevent disease through early diagnosis and treatment⁵⁸. Maintaining a healthy lifestyle can also reduce the risk of developing cancer⁵⁸.

STI/HIV/HEPATITIS C

Risky sexual behavior increases an individual's risk for sexually transmitted infections (STIs). Syphilis is one such infection. It can have very serious complications when left untreated⁵⁹. Syphilis can be spread from person to person by having unprotected sex with an infected individual. It can also be spread from an infected mother to her unborn baby⁵⁹.

50.7[♦]
PER 100,000

Syphilis rate in Cheviot, 2018-2022

Risky sexual behavior also places individuals at a risk for exposure to Human Immunodeficiency Virus (HIV). HIV, when not treated, can lead to Acquired Immunodeficiency Syndrome (AIDS)⁶⁰.

HIV is most commonly spread through risky sexual behaviors, but can also be spread by sharing a needle or syringe with an individual

who is HIV positive⁶¹.

Sharing needles or other equipment used to inject drugs can also increase an individual's risk of becoming infected with hepatitis C⁶². Hepatitis C is a virus that can result in long-term health problems, including death⁶². The majority of individuals who are infected with hepatitis C may not be aware of their infection because they do not feel sick⁶².

INFANT MORTALITY

While the mortality rates presented thus far provide a snapshot of health issues that impact communities, infant mortality is a very specific type of mortality that is often considered to be one of the most important indicators of a community's overall health and well-being.

Infant mortality is defined by the Centers for Disease Control and Prevention (CDC) as the "death of a baby before his or her first birthday⁶³." The infant mortality rate is the number of infant deaths for every 100 live births during a period of time. Infant mortality is often associated with factors such as maternal health, access to and quality of healthcare and socioeconomic conditions.

While infant mortality is one of the most important health indicators for a community, an infant mortality rate is highly sensitive to changes in the number of live births within that community, especially when the size of the population is relatively small. For example, a community that experiences several infant deaths during a given year, but also only saw a small number of births during that same year, will have an elevated infant mortality rate.

57.6[♦]
PER 100,000

Rate of new HIV diagnoses in Cheviot, 2018-2022

138.2[♦]
PER 100,000

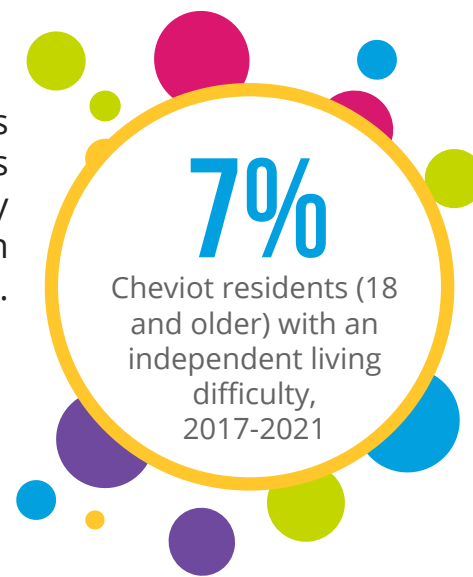
Hepatitis C rate in Cheviot, 2018-2022

**TOO FEW CASES
TO REPORT**

Infant mortality rate in Cheviot 2018-2022

QUALITY OF LIFE

Many of the health outcomes and socioeconomic indicators presented in this report can have lasting effects on an individual's quality of life. They may also lead to individuals having difficulty doing everyday tasks. One way to measure the quality of life of an individual is to look at individuals with independent living difficulties. Individuals are considered to have an independent living difficulty when they are 18 years of age and older and, due to a physical, mental or emotional problem, have difficulty doing errands alone such as visiting a doctor's office or shopping for necessities⁶⁴.



LIFE EXPECTANCY

Throughout this report, various health outcomes and socioeconomic indicators have been presented. Each is important and can impact the overall health of a community in different ways. However, all of the indicators work together to collectively impact the average life expectancy of an individual.



Average life expectancy is the estimated number of years an individual would expect to live, if they were born today, based on mortality statistics. Life expectancy is an important indicator of the overall health of a community. It summarizes the mortality patterns that prevail across all age groups⁶⁵. Factors such as access to healthcare, healthy lifestyles and disease all impact the life expectancy of an individual. With the help of improved medical and public health practice, life expectancy has dramatically increased during the twentieth century⁶⁶. However, while life expectancy has been increasing overall, individuals living in poverty and in poor communities tend to have shorter life expectancies than those living in more affluent communities.

The information presented throughout this report shows the connections between health outcomes, socioeconomic status, and life expectancy. In order to achieve health equity, targeted interventions and policy change are needed, otherwise disparities will only continue to increase. We hope this report will serve as a tool that can be used to inform and empower community change to improve upon the health of the residents in Cheviot.

APPENDICES



Geography Notes.....	I
Assets & Opportunities	II
Recommendations.....	IV
Data Tables.....	V
Asset and Opportunity Audit.....	XII
Frequently Asked Questions	XX
Common Terminology	XXIV
References	XXVII



GEOGRAPHY NOTES



The following map illustrates the communities that share census tract groups with your community.

CENSUS TRACT GROUPS FOR CHEVIOT



-  = Census Tract Group
-  = Cheviot

Census tract groups are a group of approximately 5-6 census tracts based on their location.

A census tract is an area that contains between 1,200 and 8,000 people assigned by the U.S. Census Bureau.

ASSETS & OPPORTUNITIES



This section of the report provides assets and opportunities identified from a review of the data and an asset and opportunity audit. Assets and opportunities identified from the data are the top assets and opportunities that are statistically significant when compared to Hamilton County as a whole. Other assets are identified from the asset and opportunity audit. Please see the Frequently Asked Questions for an explanation of the asset and opportunity audit.

Assets are areas or outcomes that positively impact your community. Opportunities are areas or outcomes that we view as areas for improvement to better the health, safety, and vitality of your community. Assets and opportunities were identified by Hamilton County Public Health and may differ from what you see in your community.

ASSETS

- The percentage of families with children in Cheviot where no parents are working is 2.8 times lower than Hamilton County.
- The percent of motor vehicle crashes that occur within Cheviot that involve a child, either as a driver, passenger, or pedestrian, is 1.6 times lower than Hamilton County.
- The percent of Cheviot residents who are 25 years of age and older and whose highest level of educational attainment is a high school diploma or equivalent is 1.5 times higher than Hamilton County.
- Most streets in Cheviot have sidewalks and crosswalks which allow residents to walk through the City safely.
- Cheviot has community Wi-Fi that helps residents stay connected through free Internet access.
- Cheviot has a National Safe Place site, a location in the community that serves as a safety net for youth in crisis situations.
- The Cheviot Fire Department provides safety seat inspections and installations for residents.
- Cheviot has a good network of recreational spaces including parks with playgrounds, ballfields, marked walking trails, and fitness equipment.

OPPORTUNITIES

- The percentage of fatal motor vehicle crashes that occur within Cheviot is 10 times higher than Hamilton County.
- The percentage of motor vehicle crashes that occur within Cheviot that involve a bicyclist is 5 times higher than Hamilton County.
- The percent of Cheviot residents who are 25 years of age and older and whose highest level of educational attainment is a Bachelor's degree or higher is 2.2 times lower than Hamilton County.
- The percent of Cheviot residents who are unemployed is 1.7 times higher than Hamilton County.
- The percentage of motor vehicle crashes that occur within Cheviot that involve a pedestrian is 1.5 times higher than Hamilton County.
- The percentage of households in Cheviot who receive public assistance is 1.5 times higher than Hamilton County.
- The percentage of motor vehicle crashes that occur within Cheviot that involve alcohol is 1.5 times higher than Hamilton County.

RECOMMENDATIONS



The following recommendations are based on the opportunities identified for your community. The corresponding WeTHRIVE! pathway or pathways for each recommendation are indicated to the right of each recommendation.



= CHRONIC DISEASE PATHWAY



= INJURY PREVENTION PATHWAY



= ENVIRONMENTAL HEALTH PATHWAY



= SUBSTANCE USE & ABUSE PATHWAY



= EMERGENCY PREPAREDNESS PATHWAY



= SOCIAL HEALTH PATHWAY

Recommendation	WeTHRIVE! Pathway		
Complete an environmental audit to better understand where motor vehicle crashes are occurring within Cheviot and identify strategies to address concerns.			
Implement complete streets and active transportation strategies to improve pedestrian and bicycle safety.			
Work with local schools and the Cheviot Police Department to educate the community on pedestrian and bicycle safety.			
Build partnerships and develop strategies to reduce the number of motor vehicle crashes involving alcohol.			
Identify partners to help offer job readiness training, adult education classes, and other trainings to help reduce the number of residents who are unemployed.			
Connect with partners to help develop strategies that will increase the number of residents who have health insurance.			

DATA TABLES



Please Note: Some percentages may not equal 100 percent due to rounding.

Hamilton County comparison percentages and rates are provided where applicable.

Green = statistically better compared to Hamilton County

Red = statistically worse compared to Hamilton County

	Cheviot	Hamilton County
Total Population - 2021	8,683	826,139
Male Population	4,234	401,659
Female Population	4,449	424,480
Age - 2021		
<18 Years of Age	29%	23%
18-29 Years of Age	12%	22%
30-49 Years of Age	29%	20%
50-64 Years of Age	18%	19%
65+ Years of Age	13%	16%
Race/Ethnicity - 2021		
non-Hispanic White	71%	64%
non-Hispanic Black	20%	25%
non-Hispanic Multi-Racial	3%	4%
non-Hispanic Other Race	1%	3%
Hispanic, Any Race	4%	4%
Language Spoken at Home (Residents 5 and Older) - 2017-2021		
English Only	94.7%	93%
Spanish	1.9%	3%
Other Indo-European Languages	2.2%	2%
Asian & Pacific Islander Languages	0.4%	1%
Other Language(s)	0.8%	1%
Concentrated Disadvantage - 2021		
Level of Concentrated Disadvantage	HIGH	-

Source: U.S. Census Bureau/FactFinder, 2021 American Community Survey 5-Year Estimates. Concentrated Disadvantage Methodology from the Association of Maternal and Child Health Programs.

Green = statistically better compared to Hamilton County
Red = statistically worse compared to Hamilton County

	Cheviot	Hamilton County
Racial Residential Segregation - 2021		
Level of Racial Residential Segregation	MODERATELY SEGREGATED	-
School Enrollment by Level of Schooling - 2017-2021		
Total Population Enrolled in School	2,026	207,119
Enrolled in Nursery/Preschool	4%	7%
Enrolled in Elementary & Middle School (K-8 th Grade)	56.7%	45%
Enrolled in High School (9 th -12 th Grade)	21.9%	20%
Enrolled in College (Undergraduate & Graduate School)	17.4%	28%
Highest Level of Educational Attainment (Residents 25 Years of Age and Older) - 2017-2021		
Less than a High School Graduate	6%	8%
High School Graduate or Equivalent	76%	52%
Bachelor's Degree or Higher	18%	40%
Poverty - 2017-2021		
Total Population Living in Poverty	17%	15%
Children Living in Poverty	19%	22%
Less than a High School Graduate Living in Poverty	23%	32%
High School Graduate or Equivalent, Living in Poverty	23%	25.7%
Bachelor's Degree or Higher Living in Poverty	0%	4%
Unemployment - 2017-2021		
Unemployment Rate	8%	5%
Families with Children by Number of Parents Working - 2017-2021		
Both Parents Working	46%	53%
One Parent Working	49%	34%
No Parent(s) Working	6%	13%
Housing Cost Burden - 2017-2021		
Percent Spending 30% or More of Income on Housing	31%	29%

Source: U.S. Census Bureau/FactFinder, 2017-2021 American Community Survey 5-Year Estimates. Racial Residential Segregation Methodology from the Association of Maternal and Child Health Programs.

Green = statistically better compared to Hamilton County
Red = statistically worse compared to Hamilton County

	Cheviot	Hamilton County
Income - 2017-2021		
Average Per Capita Income	\$27,304	\$37,028
Average Median Household Income	\$46,799	\$59,190
Insurance - 2017-2021		
Total Residents Uninsured	8%	6%
Children Uninsured	4%	3%
Independent Living Difficulty - 2017-2021		
Percent of Residents with an Independent Living Difficulty	7%	6%

Source: U.S. Census Bureau/FactFinder, 2017-2021 American Community Survey 5-Year Estimates.

	Cheviot	Hamilton County
Food Access - 2021		
Number of Stores that Accept SNAP as a Form of Payment	5	-

Source: U.S. Department of Agriculture

	Cheviot	Hamilton County
Family Assistance - 2017-2021		
Percent of Households Receiving Cash Assistance or SNAP	18%	11.8%

Source: U.S. Census Bureau/FactFinder, 2017-2021 American Community Survey 5-Year Estimates.

	Cheviot	Hamilton County
Child Care - 2022		
Number of Licensed Child Care Centers	3	-
Number of Licensed Child Care Centers that Serve Children in Publicly Funded Child Care	3	-

Source: Ohio Department of Job and Family Services

Green = statistically better compared to Hamilton County

Red = statistically worse compared to Hamilton County

	Cheviot	Hamilton County
Motor Vehicle Crashes - 2018-2022		
Total Motor Vehicle Crashes	983	146,942
Fatal Motor Vehicle Crashes	2% [♦]	0.2%
Motor Vehicle Crashes involving a Teen Driver (15-17 Years of Age)	10%	13.3%
Motor Vehicle Crashes involving a Child Driver, Passenger or Pedestrian	8%	13.1%
Motor Vehicle Crashes Involving a Pedestrian	2%	1.3%
Motor Vehicle Crashes Involving a Bicyclist	1% [♦]	0.2%
Drug Related Motor Vehicle Crashes	1% [♦]	0.9%
Alcohol Related Motor Vehicle Crashes	4%	2.7%

	Cheviot	Hamilton County
Injury - 2010-2014		
Age-Adjusted Motor Vehicle Crash Injury Rate, per 100,000	1,081.1	744.1
Age-Adjusted Pedestrian Injury Rate, per 100,000	67.4	55.9
Age-Adjusted Bicycle Injury Rate, per 100,000	128.5	110.8
Age-Adjusted Firearm-Related Injury Rate, per 100,000	43.7 [♦]	65.1
Child Dog Bite-Related Injury Rate, per 1,000	1.7	2.0
Age-Adjusted Fall-Related Injury Rate, per 100,000	3,681.1	2,928.3
Age-Adjusted Intentional Injury Rate, per 100,000	21.0	856.9
Age-Adjusted Drug Overdose Injury Rate, per 100,000	440.8	296.2
Child Injury Rate, per 1,000	86.1	117.3
Child Sports-Related Injury Rate, per 1,000	5.1	10.6
Death/Mortality - 2018-2022		
Age-Adjusted Fall-Related Mortality Rate, per 100,000	5.3 [♦]	7.5
Age-Adjusted Intentional Injury Mortality Rate, per 100,000	21.9 [♦]	26.3

Green = statistically better compared to Hamilton County

Red = statistically worse compared to Hamilton County

	Cheviot	Hamilton County
Violent Crimes - 2019		
Number of Violent Crimes	23	-

Source: 2019, FBI Violent Crime Database

	Cheviot	Hamilton County
Death/Mortality - 2018-2022		
Age-Adjusted Mortality Rate, per 100,000	1,023.9	889.7
Age-Adjusted Homicide Rate, per 100,000	12.6	12.9
Age-Adjusted Suicide Rate, per 100,000	9.3	13.9
Age-Adjusted Drug Overdose Mortality Rate, per 100,000	77.0	45.4
Child Fatality Rate, per 10,000	8.1♦	6.8
Age-Adjusted COPD Mortality Rate, per 100,000	42.5	35.6
Age-Adjusted Heart Disease Mortality Rate, per 100,000	223.5	178.5
Age-Adjusted Cancer Mortality Rate, per 100,000	164.0	163.8
Age-Adjusted Diabetes Mortality Rate, per 100,000	28.6	24.7
Age-Adjusted Lung Cancer Mortality Rate, per 100,000	53.4	38.9
Age-Adjusted Liver Cancer Mortality Rate, per 100,000	3.5	6.2
Age-Adjusted Oral Cancer Mortality Rate, per 100,000	3.9	2.3
Age-Adjusted Female Breast Cancer Mortality Rate, per 100,000	13.7	11.8
Age-Adjusted Colon & Rectal Cancer Mortality Rate, per 100,000	8.4	14.5

Source: 2018-2022 Ohio Department of Health, Public Health Information Warehouse Death Data Set



Green = statistically better compared to Hamilton County

Red = statistically worse compared to Hamilton County

	Cheviot	Hamilton County
Cancer Incidence - 2018-2022		
Age-Adjusted Lung Cancer Incidence Rate, per 100,000	77.6	55.6
Age-Adjusted Liver Cancer Incidence Rate, per 100,000	12.3	6.9
Age-Adjusted Oral Cancer Incidence Rate, per 100,000	18.6	11.4
Age-Adjusted Female Breast Cancer Incidence Rate, per 100,000	71.0	79.5
Age-Adjusted Colon & Rectal Cancer Incidence Rate, per 100,000	43.9	37.7

Source: 2018-2022 Ohio Department of Health, Ohio Cancer Incidence Surveillance System

	Cheviot	Hamilton County
Sexually Transmitted Infections - 2018-2022		
Syphilis Rate, per 100,000	50.7 [♦]	42.2
Newly Diagnosed HIV Case Rate, per 100,000	57.6 [♦]	17.4
Hepatitis C Rate, per 100,000	138.2 [♦]	60.3

Source: 2018-2022 Ohio Department of Health, Ohio Disease Reporting System

	Cheviot	Hamilton County
Infant Mortality - 2018-2022		
Infant Mortality Rate, per 1,000	-	8.7

Source: 2018-2022 Ohio Department of Health, Public Health Information Warehouse Birth and Death Data Set

	Cheviot	Hamilton County
Life Expectancy - 2017-2021		
Average Life Expectancy, Years	75.8	75.4

Source: 2017-2021 Ohio Department of Health, Public Health Information Warehouse Birth and Death Data Set

Cheviot

Parks/Outdoor and Physical Activity Spaces

Number of Parks and Green Spaces

3

Number of Playgrounds

2

Source: Cheviot Community Asset and Opportunity Audit

Four Year High School Graduation Rates - 2021

Cincinnati School District

78.1% F

Source: Ohio Department of Education

Percent of Students Receiving Free and Reduced School Lunch by School District - 2022 Fiscal School Year

Cincinnati School District

67.2%

Source: Ohio Department of Education

ASSET AND OPPORTUNITY AUDIT



The following are from the Asset and Opportunity Audit that was completed by Hamilton County Public Health. For more information about the Asset and Opportunity Audit, please refer to the Frequently Asked Questions on page XVI.

	Playground?
Parks/Outdoor and Physical Activity Spaces	
Harvest Home Park	YES
Memorial Fieldhouse	YES
Pioneer Park	NO
	Cheviot
Public Transportation	
Type of Public Transportation Available	METRO
	Cheviot
Tobacco/Smoke-Free	
Tobacco-Free City Properties (including outdoor areas)	NO
	Cheviot
Recycling	
Recycling Program	DROP-OFF SITE
Community Recycling Rate - 2021	1.43%
	Cheviot
Points of Dispensing (POD)	
Designated POD for Community	NO
Updated POD Plan	NO

Storm Water

Member of the Hamilton County Storm Water District

NO

ASSET AND OPPORTUNITY PHOTOS

CHEVIOT MUNICIPAL BUILDING



HARVEST HOME PARK





cheviot history

The City of Cheviot, known as the "Heart of the West Side", covers 12 square miles and is named after the Cheviot Hills that form a boundary between England and Scotland. Below are some important dates in Cheviot history:

- 1766 - Sir Lubin Stull is Scottish immigrant, John Gray
- 1846 - Sir Robert Howe Platts - circa 1850, the "Hogback" like far junction
- 1849 - Robert Lathrop established as mercantile agent
- 1858 - Cheviot named and created by John Gray
- 1867 - first bridge is built over the Cheviot
- 1891 - Cheviot becomes a village
- 1901 - Established Cheviot school - [Cheviot School](#)
- 1922 - Cheviot becomes a City
- 1930 - Construction of Cheviot Postoffice funded by WPA
- 1967 - New City was declared
- 2000 - Creation of Cheviot, establishment of community center
- 2009 - Cheviot Postoffice no longer a Postoffice, Parks, and Recreation department and City Center

Alma of interest, singer Andy Williams and singer/actress Diane Chambers lived in Cheviot when growing up.

fitness trail

Get Healthy - Get Exercising Get Going!

The Fitness Trail offers a physical challenge to improve fitness and enjoy the beautiful view. Build muscle strength, improve circulation, however you choose to enjoy the trail, don't forget to slow down and stretch before you begin.

Warm Up Before the Fitness Trail

- Walk or stretch for warm up with easy stretches like toe pulls and toe stretch. They do these stretches right before each jumping rope.

Cool Down After the Fitness Trail

- A gradual cool down is important to avoid sore muscles. Walk or jog slowly and do some leg stretches to complete your workout.

walking routes



PICK A ROUTE

yellow	1 mi	●	●
blue	1.5 mi	●	●

● Cheviot School
● Cheviot Postoffice
● Cheviot Center

CHEVIOT LIBRARY



MEMORIAL FIELDHOUSE



FREQUENTLY ASKED QUESTIONS



The following provides answers to some of the most frequently asked questions about the WeTHRIVE! Community Health Assessment.

How are you determining if someone lives in my community?

We have access to the address of every injury, death, birth and reported cases of notifiable cancer and infectious disease. We map out each address to determine the exact location within Hamilton County. We then determine what community that individual resides in.

What is a rate?

A rate is the measure of an outcome (e.g., injury, death, etc.) over a specific time frame within your community.

Why is the rate per 100 residents? We don't have that many people living in our community.

In order to compare your community to Hamilton County, rates are typically standardized (e.g., per 100 residents) to allow them to be compared to other geographic areas. It allows for a more “apples-to-apples” comparison.

What is a mortality rate?

A mortality rate is a specific type of rate that measures the number of deaths in your community's population over a specific time frame.

What is an incidence rate?

An incidence rate is a specific type of rate that measures the number of NEW cases of a disease within your community.

What are age-adjusted rates and why do we use them?

Age-adjusted rates are a specific type of rate that take into account the age structure of your community to help get a better picture of how a certain disease or injury is affecting your community.

Age-adjusted rates are important because they allows us to compare your community with other areas that may be very different in terms of the age of their residents. This allows for an “apples-to-apples” comparison of your community to other areas. For example, a community with more young residents is able to be compared to a community with more older residents.

Why are you indicating when a rate is based on less than 20 cases, and why is it a concern?

When a rate is based on a small number of cases (less than 20), it can be difficult to determine if there was a true change in the underlying risk for the disease/injury, or if rate is due to random changes in the disease/injury. It is difficult to make assumptions about an entire community's problems when the incidence of the disease/injury is sporadic and/or infrequent.

Why is my community grouped with other communities using census tracts?

Certain indicators are only available at the census tract level. In order to perform the necessary calculations, groupings of the census tracts had to be done. The grouping of the census tracts was done by grouping census tracts that were in the same area.

What is racial residential segregation, why is it important and what does it mean?

Racial residential segregation is the degree to which two or more racial groups live separately from one another in a geographic area. Racial residential segregation is important because it can constrain the socioeconomic advancement of minority groups by limiting education quality and employment. Racial residential segregation is associated with unequal access to healthcare resources including healthcare settings and quality of treatment.

In this report racial residential segregation is calculated using non-Hispanic white and non-Hispanic black populations. When an area is highly segregated this means that whites live in white only census tracts and blacks live in black only census tracts. When an area is well integrated, white and black residents live in the same census tracts in nearly equal numbers. Areas that are moderately segregated means that there are census tracts in which both white and black residents live together in and census tracts in which only white residents live and census tracts in which only black residents live.

What is concentrated disadvantage and how is it calculated?

Concentrated disadvantage is an indicator that shows areas at an economic disadvantage. Communities that have higher levels of concentrated disadvantage may have less mutual trust and willingness among community members to intervene for the common good, often known as collective efficacy. Collective efficacy is a critical tool communities can use to prevent violence. Children who live and grow in disadvantage areas are more likely to experience violence. Communities with high levels of concentrated disadvantage are also at an increased risk for higher rates of infant mortality.

Concentrated disadvantage is calculated using five indicators:

1. Percent of individuals living below the poverty line;
2. Percent of individuals on public assistance;
3. Percent of female-headed households;
4. Percent of the population who are unemployed;
5. Percent of the population who are less than 18 years of age

Concentrated disadvantage shows how the indicators interact with each other to influence the overall health of individuals living in a particular community.

What do you mean by educational attainment?

Educational attainment is the highest level of education that an individual has completed. For example, the percent of individuals who are less than a high school graduate means that those individuals did not finish and graduate from high school. In this report, educational attainment is calculated for all individuals over the age of 25 in a community.

What is an asset and opportunity audit?

The asset and opportunity audit is one way for Hamilton County Public Health to gather information about your community that wouldn't show up in the mortality and injury data. Health educators used a variety of methods to gather information about your community including internet searches, data review, and visual observations. Time was spent driving and walking in the community and taking photographs to illustrate the story.

The audit focused on the physical environment, nutrition environment, air and water quality, housing, waste management, and emergency preparedness. Information gathered as part of the asset and opportunity audit is used to provide a snapshot of existing risk and protective factors in your community, as well as to shape recommendations for interventions that can directly be tied back to your community. Assets and opportunities identified provide context on how the community's social, economic, and physical environment may impact its health, safety, and vitality.

How did you determine what was a park in my community?

A park was determined through the assets and opportunities audit. Spaces were considered parks if they had signs that indicated the space was open to public use. They may or may not contain playgrounds, shelters, walking paths, picnic tables, or other pieces of equipment.

How did you determine if there was public transportation in my community?

During the assets and opportunities audit of your community our health educators went out into your community to find bus stops. If there were bus stops in your community, it was determined that there was public transportation in your community.

How did you know how many car crashes occurred in my community?

Access to crash data was obtained from the Ohio Department of Public Safety.

Do motor vehicle injuries include those where a person was hit by a car?

No. Motor vehicle injuries are only those injuries where a person was inside the car, as the driver or passenger, and was involved in a car accident. If a person is riding their bike and is hit by a car, it is classified as a bicycle-related injury. If the person was walking across the street and was hit by a car, it is classified as a pedestrian-related injury.

Why are you only reporting the number of people who died from a chronic disease and not how many people are living with the disease in my community?

Unfortunately, there is no way to determine the number of individuals living with a chronic disease such as diabetes or heart disease within your community. Currently there is no national or state reporting database that will allow us to see how many people are living with a particular disease at a sub-county level. Providing death information on chronic disease gives some insight into whether a chronic disease is a problem within your community. If your community has higher rates of death due to chronic diseases such as diabetes or heart disease, it can be expected that a community may have a large number of residents currently living with the chronic disease.

Is there a way to find rates for other types of cancer in my community?

Yes. The rates presented in this report are for the most frequently reported types of cancer, or cancer that can be associated with certain health behaviors. Rates for additional types of cancer may be available upon request.

What can I do to improve the health of my community?

There are many things you can do to improve the health of your community. Throughout this report assets (areas of positive outcomes) and opportunities (areas for improvement) were identified. Recommendations on how to address some of the opportunities in your community are provided in the “Recommendations” section. You may also want to join your WeTHRIVE! team to find additional ways you can help to improve the health of your community.

COMMON TERMINOLOGY



The following provides information on some of the terms used throughout the WeTHRIVE! Community Health Assessment.

4-Year Graduation Rate:

The percentage of students who entered high school as a freshman and graduated within four school years.

Age-Adjusted Mortality Rate:

A type of mortality rate that has been statistically modified to eliminate the effect of different age distributions among different populations.

Bicycle-Related Injury:

Injury to a bicyclist from a collision, loss of control crash, or some other event involving a moving vehicle or pedestrian.

Cause-Specific Mortality Rate:

A rate calculated as the number of deaths attributed to a specific cause during a specified time period among a population, divided by the size of the population.

Census:

A measurement of a population's demographics performed by the United States Census Bureau once every 10 years.

Concentrated Disadvantage:

An indicator that shows areas/communities that are at an economic disadvantage.

Demographic Information:

The characteristics of a person or group (i.e., age, sex, race/ethnicity, residence, and occupation). Demographic information is used to characterize individuals or populations.

Educational Attainment:

The highest level of education that an individual has completed.

Frequency:

The amount or number of occurrences of an attribute or health outcome in a population.

Health Indicator:

Any of a variety of measure (e.g., mortality rate) that indicates the state of health of a population.

High-Risk Group:

A group of people whose risk for a particular disease, injury or other health condition is greater than that of the rest of their community or population.

Incidence:

A measure of the frequency with which new cases of illness, injury, or other health condition occurs among a population during a specified period.

Incidence Rate:

A measure of the frequency with which new cases of illness, injury, or other health conditions occur, expressed for a particular time frame, usually per 100,000 population.

Infant Mortality Rate:

A type of mortality rate for children less than one year of age. It is calculated as the number of infant deaths divided by the number of live births during the same period, and is expressed per 1,000 live births. An infant mortality rate is a universally accepted indicator of the health of a nation's population and adequacy of its health-care system.

Intentional Injury:

A type of injury that is sustained due to knowingly inflicting harm to oneself or another individual.

Life Expectancy:

A statistical projection of the average number of years a person is expected to live, if they were born today.

Mean:

The average of a set of numbers.

Median Household Income:

The amount of income that divides all income in a community into two equal groups, half having income above that amount, and half having income below that amount.

Mortality Rate:

A measure of the frequency of occurrence of death among a defined population during a specified time interval.

Notifiable Disease:

A type of disease that, by law, must be reported to public health authorities upon diagnosis.

Pedestrian-Related Injury:

Injury to a person involved in a collision, where the person was not, at the time of the collision, riding in or on a motor vehicle, motorcycle, bicycle, or streetcar. This also includes individuals who were struck by cars, pick-up trucks, vans, buses and SUVs.

Per-Capita Income:

The average money income received in the past 12 months for every man, woman, and child in a geographic area. Per-capita income is more commonly known as income per person.

Population:

The total number of inhabitants of a geographic area or the total number of persons in a particular group (e.g., the number of persons engaged in a certain occupation).

Prevalence:

The number or proportion of cases, events or attributes among a given population.

Prevalence Rate:

The proportion of a population that has a particular disease, injury, other health condition, or attribute at a specified point in time, or during a specified period.

Racial Residential Segregation:

The degree to which two or more racial groups live separately from one another in a geographic region.

Rate:

An expression of the relative frequency with which an event occurs among a defined population per unit of time. It is calculated as the number of new cases or deaths during a specified period per the population and/or the time period in which the population was at risk.

Risk Factor:

An aspect of personal behavior or lifestyle, an environmental exposure, or a hereditary characteristic that is associated with an increase in the occurrence of a particular disease, injury, or health condition.

Trend:

The movement or change in frequency over time, usually upward or downward.

Vital Statistics:

Data about recorded births and deaths. This information is recorded on a birth or death certificate for an individual.

REFERENCES

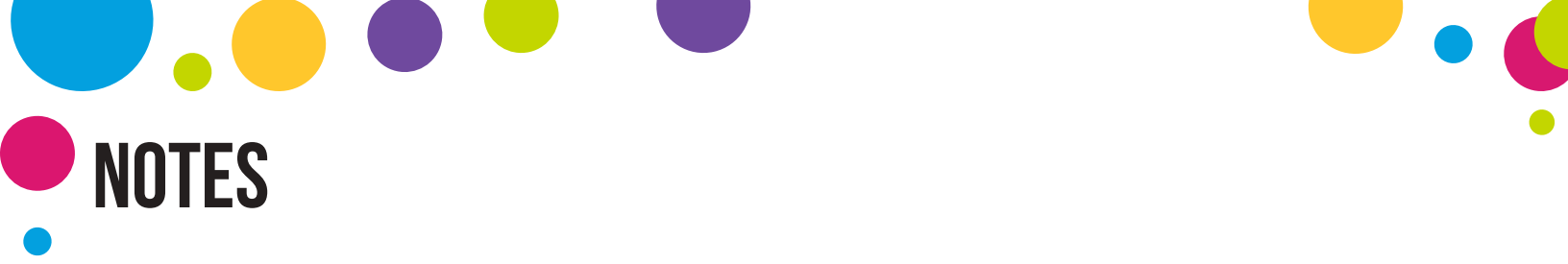


1. University of Arkansas, Division of Agriculture. (n.d). Understanding Demographics. Retrieved June 29, 2015, from <https://www.uaex.edu/business-communities/Understanding%20Community%20Demographics.pdf>
2. Centers for Disease Control and Prevention. (2012, August 24). Population Characteristics. Retrieved June 29, 2015, from <http://ephtracking.cdc.gov/showPcMain.action>
3. New South Wales Government, Department of Education. (2015). Understanding Racism. Retrieved November 20, 2015, from <http://www.racismnoway.com.au/about-racism/understanding/culture-language-identity.html>
4. Association of Maternal & Child Health Programs. (2013, January 1). Life Course Indicator: Racial Residential Segregation, by Community. Retrieved October 22, 2014, from http://www.amchp.org/programsandtopics/data-assessment/LifeCourseIndicatorDocuments/LC-16_Racial%20Residential%20Segregation_9-4-2014.pdf
5. Association of Maternal & Child Health Programs. (2013, January 1). Life Course Indicator: Concentrated Disadvantage. Retrieved October 22, 2014, from http://www.amchp.org/programsandtopics/data-assessment/LifeCourseIndicatorDocuments/LC-06_ConcentratedDisad_Final-4-24-2014.pdf
6. New Zealand Ministry of Education. (2010, February 1). Effects of Poverty, Hunger, and Homelessness on Children and Youth. Retrieved October 22, 2014, from <http://www.educationcounts.govt.nz/indicators/main/education-and-learning-outcomes/1903>
7. Centers for Disease Control and Prevention. (2012, May 16). Higher Education and Income Levels Key to Better Health, According to Annual Report on Nation's Health. Retrieved February 19, 2015 from http://www.cdc.gov/media/releases/2012/p0516_higher_education.html
8. National Education Association. (n.d.) Early Childhood Education. Retrieved November 20, 2015, from: <http://www.nea.org/home/18163.htm>
9. Reynolds, A., Temple, J., Robertson, D., Mann, E. (2001, May 9). Long-term Effects of an Early Childhood Intervention on Educational Achievement and Juvenile Arrest. *The Journal of the American Medical Association*. 285(18), 2339-2346. doi:10.1001/jama.285.18.2339. Retrieved November 23, 2015, from <http://jama.jamanetwork.com/article.aspx?articleid=193816#RESULTS>
10. National Education Association. (2008). An NEA Policy Brief: Early Childhood Education and School Readiness. Retrieved November 23, 2015, from http://www.nea.org/assets/docs/HE/mf_PB03_EarlyChildhood.pdf
11. Association of Maternal & Child Health Programs. (2013, January 1). Life Course Indicator: High School Graduation Rate. Retrieved October 22, 2014, from http://www.amchp.org/programsandtopics/data-assessment/LifeCourseIndicatorDocuments/LC-20_HS_gradrate_Final_3-26-2014.pdf
12. Partners for a Hunger-Free Oregon. (n.d.) Goal 1: Increase Economic Stability for People, Communities, and the State. Retrieved December 1, 2015, from <https://oregonhunger.org/increase-economic-stability>
13. Michael & Susan Dell Foundation. (n.d.). Family Economic Stability. Retrieved December 1, 2015, from <http://www.msdf.org/programs/family-economic-stability/>
14. World Health Organization. (2003, January 1). DAC Guidelines and Reference Series: Poverty and Health. Retrieved October 22, 2014, from http://www.who.int/tobacco/research/economics/publications/oecd_dac_pov_health.pdf
15. U.S. Department of Labor. (2015, April 2). Earnings and Unemployment Rates by Educational Attainment. Retrieved April 14, 2015, from http://www.bls.gov/emp/ep_chart_001.htm

16. Association of Maternal & Child Health Programs. (2013, January 1). Life Course Indicator: Unemployment. Retrieved October 22, 2014, from http://www.amchp.org/programsandtopics/data-assessment/LifeCourseIndicatorDocuments/LC-22_Unemployment_Final-11-6-2013.pdf
17. Robert Wood Johnson Foundation. (2013, March). Health Policy Snapshot: How Does Employment - or Unemployment - Affect Health?. Retrieved December 3, 2015, from http://www.rwjf.org/content/dam/farm/reports/issue_briefs/2013/rwjf403360
18. American Academy of Pediatrics:: Healthy Children.org. (2015, November 21). Working Parents. Retrieved December 3, 2015, from <https://www.healthychildren.org/English/family-life/work-play/Pages/Working-Parents.aspx>
19. U.S. Census Bureau. (n.d.). Who Can Afford to Live in a Home?: A Look at Data From the 2006 American Community Survey. Retrieved December 4, 2015, from <http://www.census.gov/housing/census/publications/who-can-afford.pdf>
20. U.S. Department of Housing and Urban Development. (n.d.). Affordable Housing. Retrieved July 6, 2015, from http://portal.hud.gov/hudportal/HUD?src=/program_offices/comm_planning/affordablehousing/
21. U.S. Census Bureau. (n.d.). Per Capita Income. Retrieved December 4, 2015, from http://quickfacts.census.gov/qfd/meta/long_INC910213.htm
22. Berger. M., (n.d.). Kentucky's Per Capita Income: Catching Up to the Rest of the Country. Retrieved December 10, 2015, from <http://cber.uky.edu/Downloads/berger97.htm>
23. U.S. Census Bureau. (n.d.). Median Household Income. Retrieved December 10, 2015, from http://quickfacts.census.gov/qfd/meta/long_INC110213.htm
24. Rhode Island Health Care Matters. (n.d.). Median Household Income. Retrieved December 10, 2015, from <http://www.rihealthcarematters.org/modules.php?op=modload&name=NS-Indicator&file=indicator&id=14094769>
25. CLASP: Policy Solutions That Work for low-Income People. (2015, June). Child care Assistance: A Vital Support for Working Families. Retrieved January 6, 2016, from <http://www.clasp.org/resources-and-publications/publication-1/CCDBG-Advocacy-Fact-Sheet.pdf>
26. Hamilton County Job & Family Services. (n.d.). Cash Assistance. Retrieved December 29, 2015, from <https://www.hcjfs.org/services/cash-assistance/>
27. Hamilton County Job & Family Services. (n.d.) Child Care. Retrieved January 6, 2016, from <https://www.hcjfs.org/services/child-care/>
28. U.S. Department of Agriculture. (2016, January 7). National School Lunch Program. Retrieved January 7, 2016, from <http://www.fns.usda.gov/nslp/national-school-lunch-program-nslp>
29. Roof, K., Oleru, Ngozi., (2008). Public Health: Seattle and King County's Push for the Built Environment. Journal of Environmental Health. 71(1). 24-27. Retrieved January 7, 2016, from http://www.cdc.gov/nceh/ehs/docs/jeh/2008/july-aug_w_case_studies/jeh_jul-aug_08_seattle.pdf
30. U.S. Department of Transportation, Federal Transit Administration. (n.d.). Alternative Transportation and Your Health. Retrieved January 7, 2016, from <http://www.fta.dot.gov/14504.htm>
31. The National Center for Review & Prevention of Child Deaths. (.n.d.). Motor Vehicle. Retrieved November 13, 2015, from <https://www.childdeathreview.org/reporting/motor-vehicle/>
32. Centers for Disease Control and Prevention. (2015, December 29). Injury Prevention & Control: Motor Vehicle Safety - Cost data and Prevention Policies. Retrieved January 7, 2016, from <http://www.cdc.gov/motorvehiclesafety/costs/index.html>

33. Centers for Disease Control and Prevention. (2007, March 17). Definitions for WISQARS Nonfatal Injury. Retrieved December, 28, 2015, from <http://www.cdc.gov/ncipc/wisqars/nonfatal/definitions.htm#pedestrian>
34. U.S. Department of Transportation, Federal Highway Administration. (n.d.). Pedestrian and Bicycle Information Center. Retrieved December, 28, 2015, from http://www.pedbikeinfo.org/data/factsheet_social.cfm
35. MacDonald, J. (2015, September). Community Design and Crime: The Impact of Housing and the Built Environment. Retrieved January 4, 2016, from http://www.jstor.org/stable/10.1086/681558?seq=1#page_scan_tab_contents
36. Curry, A., Latkin, C., Davey-Rothwell, M. (2009, July 1). Pathways to Depression: The Impact of Neighborhood Violent Crime on Inner-City Residents in Baltimore, Maryland, U.S.A. *Social Science & Medicine*. 67(1). 23-30. Retrieved January 4, 2016, from <http://www.ncbi.nlm.nih.gov/pmc/articles/PMC2684449/>
37. The Federal Bureau of Investigation. (n.d.). Violent Crime. Retrieved January 6, 2016, from <https://www.fbi.gov/about-us/cjis/ucr/crime-in-the-u.s/2014/crime-in-the-u.s.-2014/offenses-known-to-law-enforcement/violent-crime>
38. Centers for Disease Control and Prevention. (2014, December 24). Suicide: Consequences. Retrieved April 14, 2015, from <http://www.cdc.gov/violenceprevention/suicide/consequences.html>
39. Dannenberg, A., Frumkin, H. (2012, September 18). *Making Healthy Place: Designing and Building for Health, Well-being, and Sustainability*, Washington: Island Press.
40. Hembree, C., Galea, S. Ahern, J., Tracy, M., Markham Piper, T., Miller, J., Vlahov, D.k, Tardiff, KD. (2005). The Urban Built Environment and Overdose Mortality in New York City Neighborhoods. *Health & Place* 11(2005). 147-156. Retrieved January 6, 2016, from <https://pubweb.bnl.gov/~frenkel/BTO/weill.pdf>
41. Cummins, S., Jackson, R. (n.d.). The Built Environment and Children's Health. Retrieved January, 6, 2016, from http://www.cdc.gov/healthypeople/articles/the_built_environment_and_children_health.pdf
42. Hamilton County Public Health. (2014, January 9). Sports-Related Injuries, 2004-2011. Retrieved January 6, 2016, from http://www.hamiltoncountyhealth.org/files/files/Reports/Sports_Related_Injury.pdf
43. National Institute of Arthritis and Musculoskeletal and Skin Diseases. (2013, November). Handout on Health: Sports Injuries. Retrieved January 6, 2016, from http://www.niams.nih.gov/Health_Info/Sports_Injuries/default.asp#ra_2
44. Hamilton County Public Health. (2015, September). Dog Bite-Related Injuries. Retrieved January 6, 2016 from http://www.hamiltoncountyhealth.org/files/files/Forms/EPI/Dog_Bite_Related_Injuries.pdf
45. Healthy People.gov. (.n.d). Access to Health Services. Retrieved January 7, 2016, from <http://www.healthypeople.gov/2020/topics-objectives/topic/Access-to-Health-Services>
46. PBS.org. (n.d.). The Uninsured. Retrieved October 22, 2014, from <http://www.pbs.org/healthcarecrisis/uninsured.html>
47. Centers for Disease Control and Prevention. (2011, April). Census Tract Level State Maps the Modified Retail Food Environment Index (mRFEI). Retrieved May 26, 2015, from <http://www.cdc.gov/obesity/downloads/childrensfoodenvironment.pdf>
48. Centers for Disease Control and Prevention. (2015, March 1). Chronic Obstructive Pulmonary Disease (COPD). Retrieved January 7, 2016, from <http://www.cdc.gov/copd/index.html>
49. American Lung Association. (n.d.). How Serious is COPD. Retrieved January 7, 2016, from <http://www.lung.org/lung-health-and-diseases/lung-disease-lookup/copd/learn-about-copd/how-serious-is-copd.html>

50. Centers for Disease Control and Prevention. (2009, November 16). About Heart Disease. Retrieved October 22, 2014, from <http://www.cdc.gov/heartdisease/about.htm>
51. Centers for Disease Control and Prevention. (2015, March 31). Basics About Diabetes. Retrieved January 7, 2016, from <http://www.cdc.gov/diabetes/basics/diabetes.html>
52. Centers for Disease Control and Prevention. (2015, September 30). Leading Causes of Death. Retrieved January 7, 2016, from <http://www.cdc.gov/nchs/fastats/leading-causes-of-death.htm>
53. American Cancer Society. (n.d.). What Causes Cancer?. Retrieved April 13, 2015, from <http://www.cancer.org/cancer/cancercauses/index>
54. Centers for Disease Control and Prevention. (2016, January 18). Retrieved January 7, 2016, from <http://www.cdc.gov/tobacco/campaign/tips/diseases/cancer.html>
55. American Cancer Society. (n.d.). Alcohol Use and Cancer. Retrieved January 7, 2016 from <http://www.cancer.org/cancer/cancercauses/dietandphysicalactivity/alcohol-use-and-cancer>
56. American Cancer Society. (n.d.). What are the risks for breast cancer?. Retrieved January 7, 2016, from <http://www.cancer.org/cancer/breastcancer/detailedguide/breast-cancer-risk-factors>
57. Centers for Disease Control and Prevention. (2015, July 21). Retrieved January 7, 2016 from <http://www.cdc.gov/cancer/dcpc/prevention/index.htm>
58. Centers for Disease Control and Prevention (2015, November 12). Syphilis - CDC Fact Sheet. Retrieved January 7, 2016 from <http://www.cdc.gov/std/syphilis/stdfact-syphilis.htm>
59. Centers for Disease Control and Prevention. (n.d.). General HIV Information. Retrieved January 7, 2016, from https://wwwn.cdc.gov/hivrisk/what_is/what_is_hiv.html
60. Centers for Disease Control and Prevention. (n.d.). Can I get or transmit HIV from...?. Retrieved January 7, 2016, from <https://wwwn.cdc.gov/hivrisk/transmit/>
61. Centers for Disease Control and Prevention. (2015, May 31). Viral Hepatitis-Hepatitis C Information. Retrieved January 7, 2016 from <http://www.cdc.gov/hepatitis/hcv/>
62. Centers for Disease Control and Prevention. (2016, January 12). Infant Mortality. Retrieved January 7, 2016, from <http://www.cdc.gov/reproductivehealth/maternalinfanthealth/infantmortality.htm>
63. United States Census Bureau. (2014, June 9). American Community Survey. Disability Methodology. Retrieved January 8, 2016 from <https://www.census.gov/people/disability/methodology/acs.html>
64. Government of Canada. (2010, January 11). Life Expectancy. Retrieved October 22, 2014 from <http://www.statcan.gc.ca/pub/82-229-x/2009001/demo/lif-eng.htm>
65. National Institutes of Health. (2011, October). Global Health and Aging: Living Longer. Retrieved April 14, 2015, from <https://www.nia.nih.gov/research/publication/global-health-and-aging/living-longer>



NOTES

NOTES

NOTES



NOTES





NOTES

NOTES





We THRIVE!

*Community Wellness in Action*SM

CONTACT US

WeTHRIVE!
250 William Howard Taft Rd
Cincinnati, Ohio 45219
P. (513) 946.7800
F. (513) 946.7890

WatchUsThrive.org

WE'RE SOCIAL!

Follow us on your favorite social media platform



@WATCHUSTHRIVE



**HAMILTON COUNTY
PUBLIC HEALTH**

PREVENT. PROMOTE. PROTECT.

