

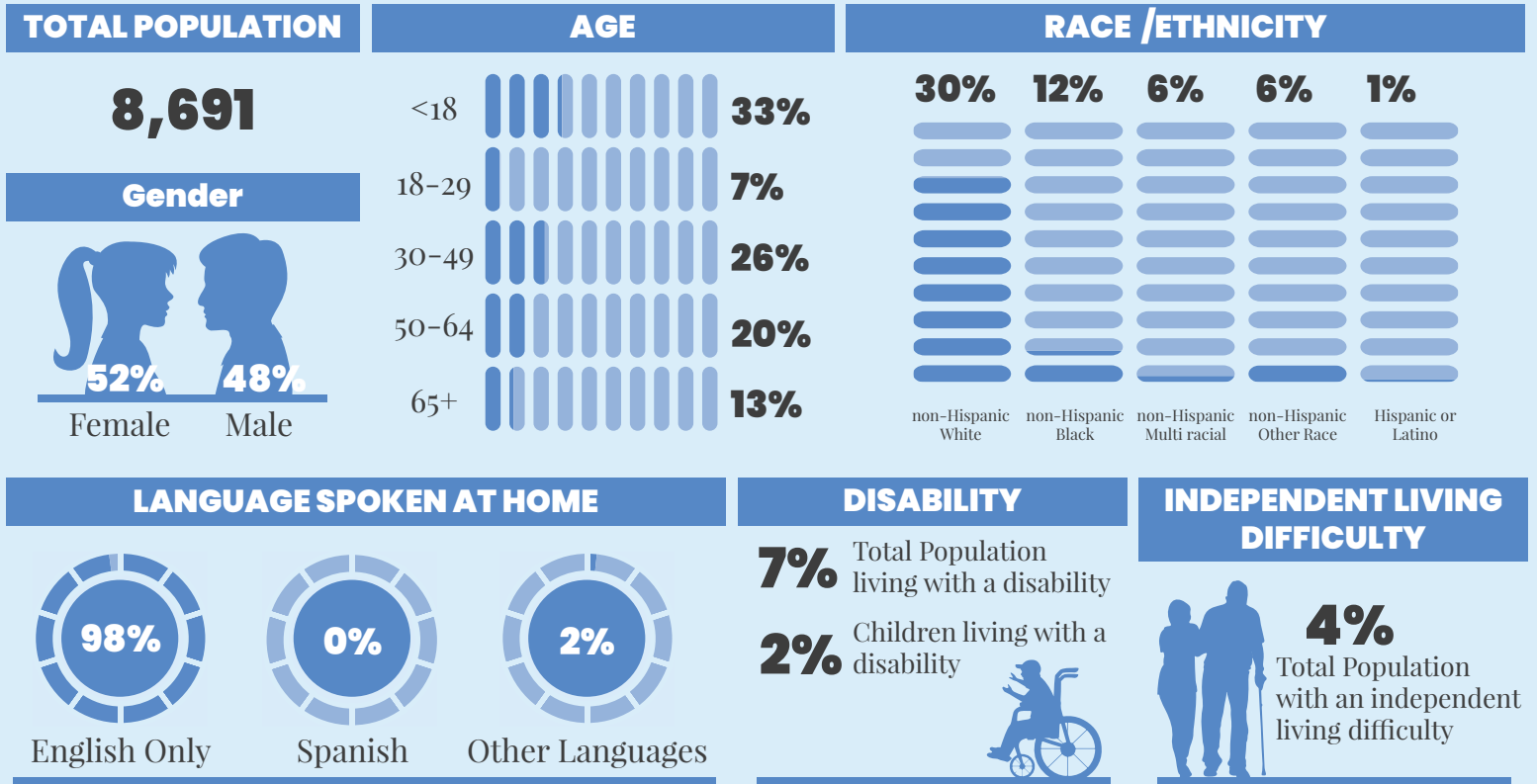
# WeTHRIVE!<sup>SM</sup> Data Profile

# WYOMING

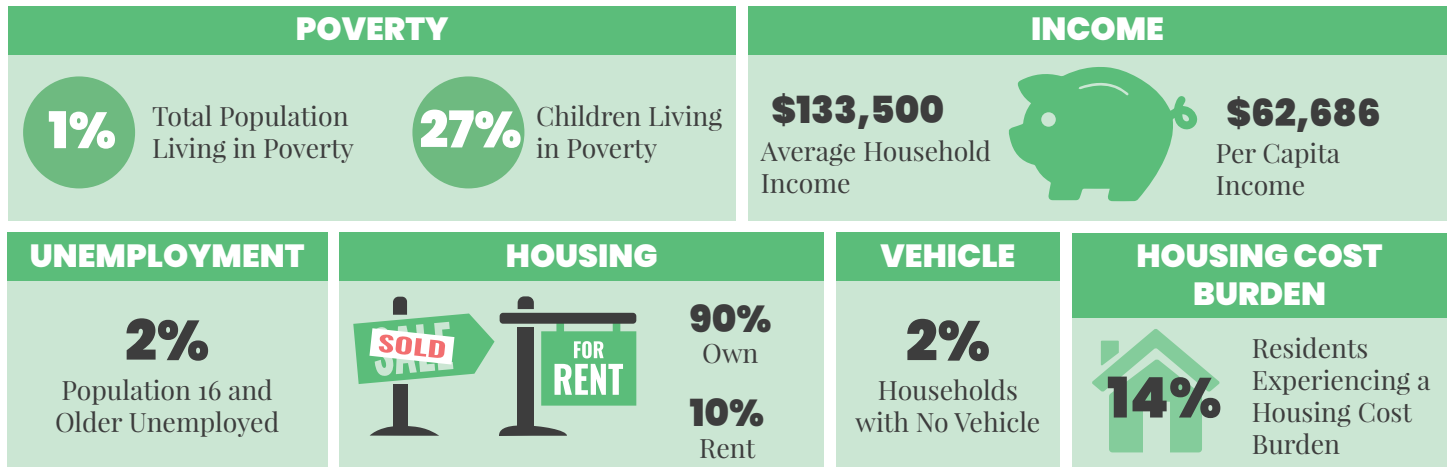
• 2023 •



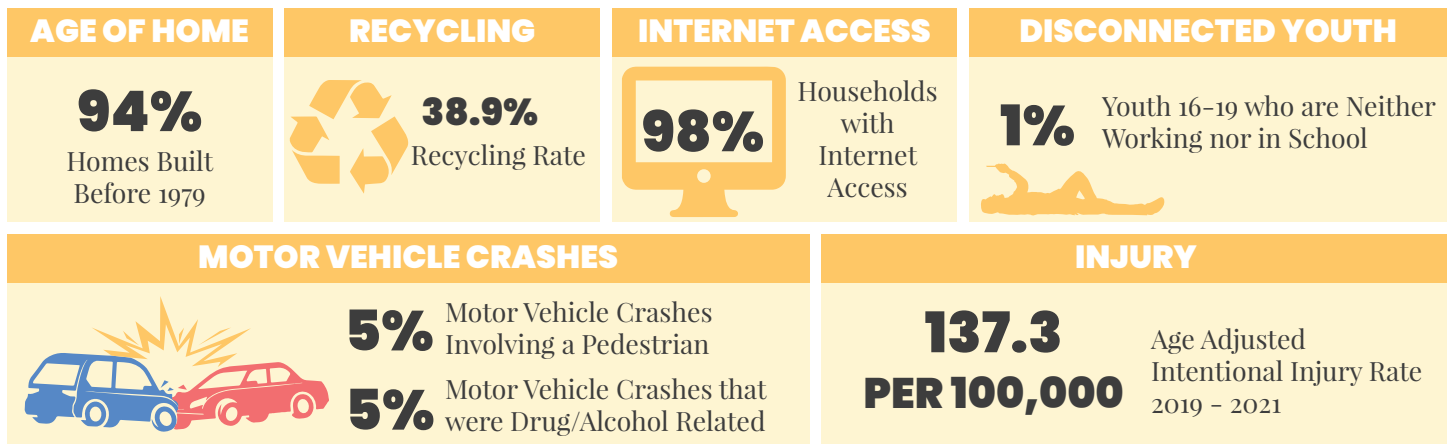
## DEMOGRAPHICS | 2021



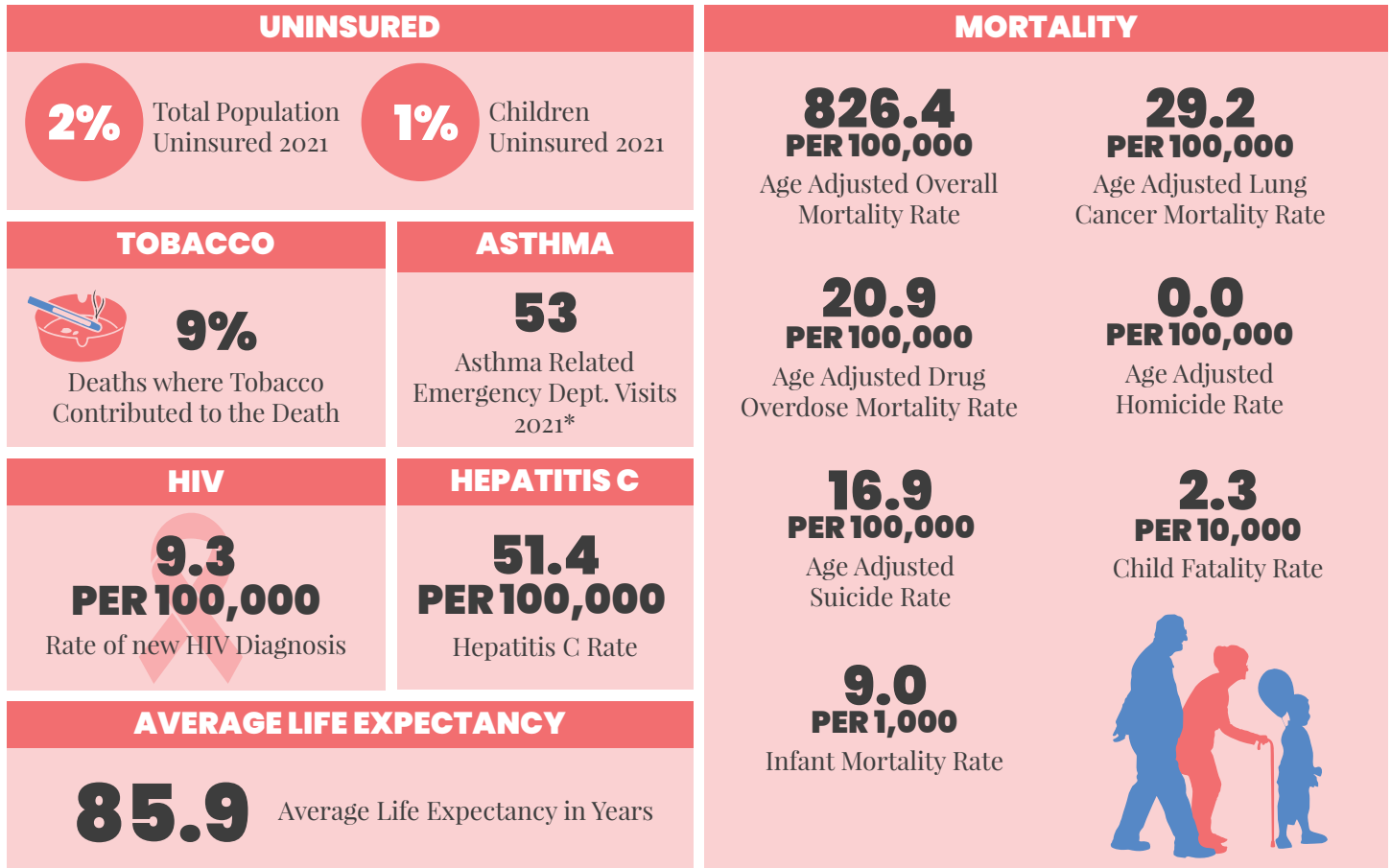
## ECONOMIC STABILITY | 2021



## NEIGHBORHOOD & BUILT ENVIRONMENT | 2021



# HEALTHCARE & HEALTH OUTCOMES | 2017–2021



\*NOTE | This is data is ZIP codes that cover Wyoming. These ZIP codes are: 45215

## WeTHRIVE! IN WYOMING

Wyoming became a WeTHRIVE! community in 2020.

The WeTHRIVE! initiative is looking forward to working with Wyoming in 2023.



# We THRIVE!

*Community Wellness in Action*

## CONTACT US

WeTHRIVE!  
250 William Howard Taft Rd  
Cincinnati, Ohio 45219  
(513) 946.7800

[www.WatchUsThrive.org](http://www.WatchUsThrive.org)

## WE'RE SOCIAL!

Follow us on your favorite social media platform



**@WATCHUSTHRIVE**

Use the QR Code below for additional information about the data in this report.

