

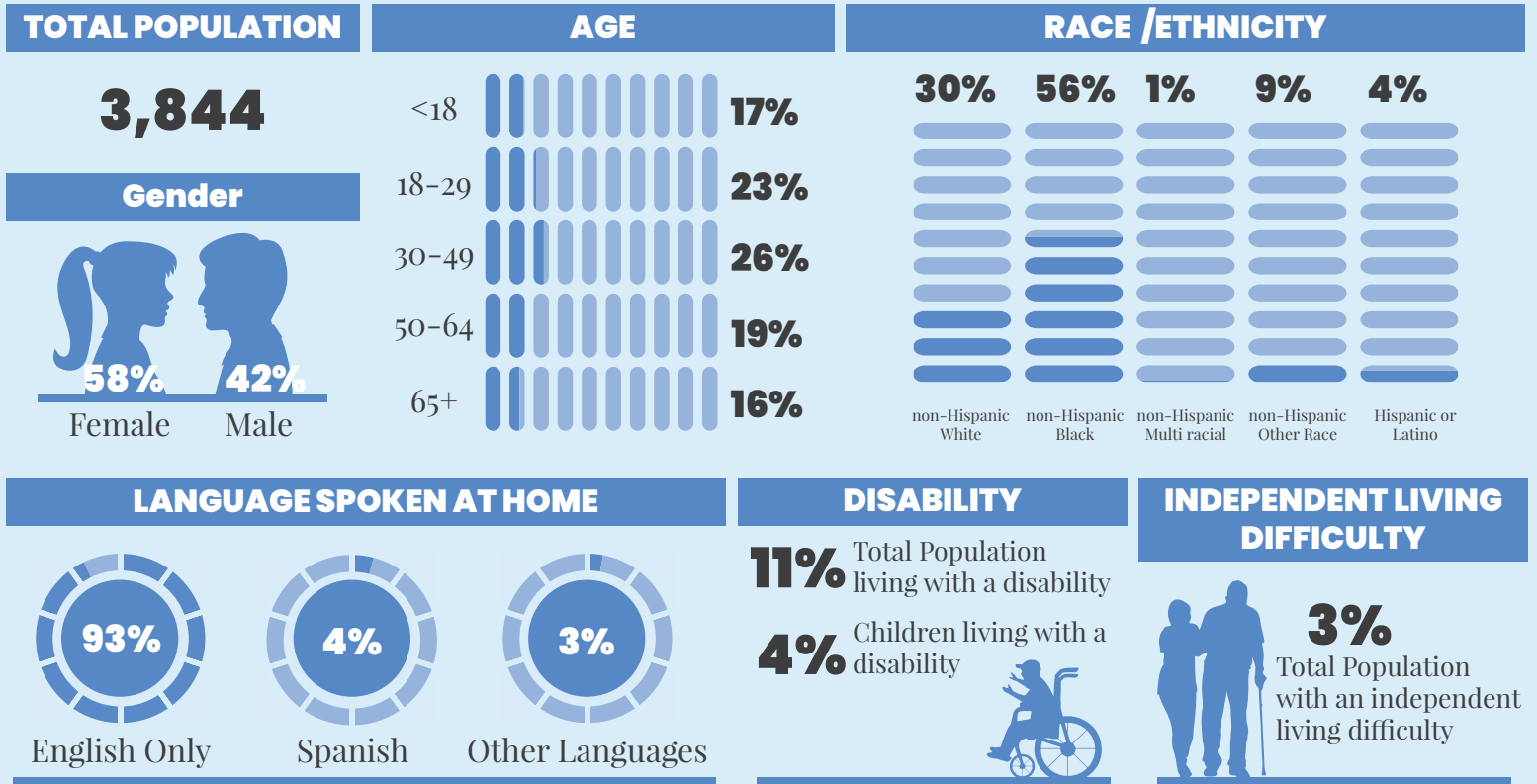
WeTHRIVE!SM Data Profile

WOODLAWN

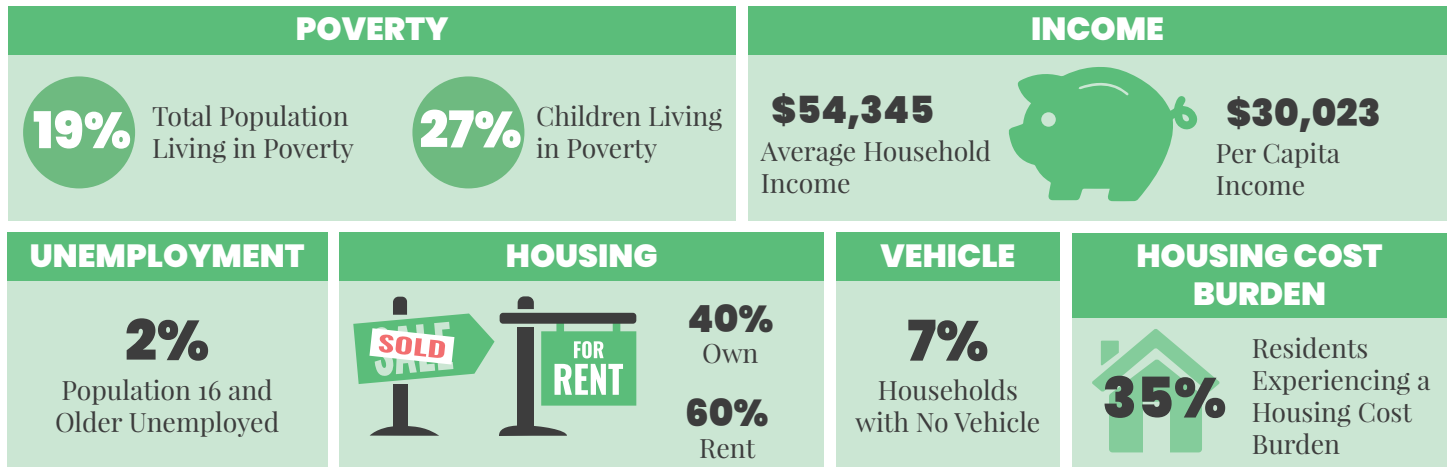
• 2023 •



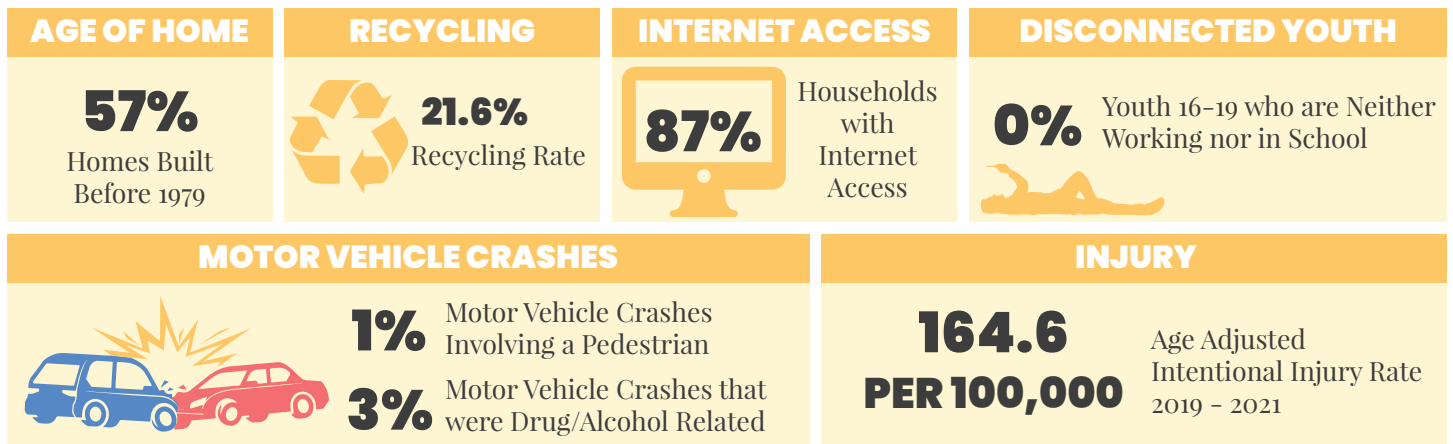
DEMOGRAPHICS | 2021



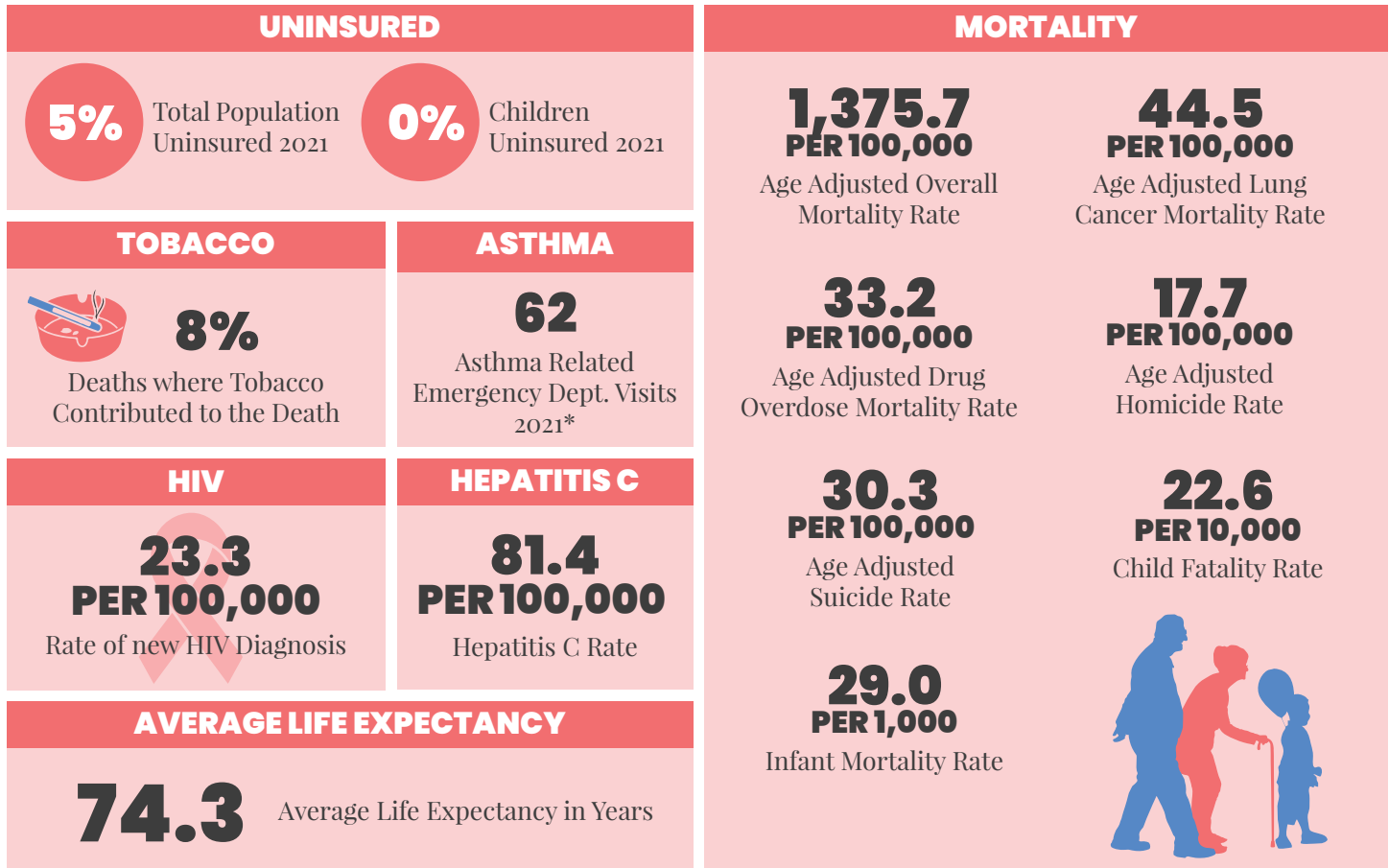
ECONOMIC STABILITY | 2021



NEIGHBORHOOD & BUILT ENVIRONMENT | 2021



HEALTHCARE & HEALTH OUTCOMES | 2017–2021



*NOTE | This is data is ZIP codes that cover Woodlawn. These ZIP codes are: 45215, 45246

WeTHRIVE! IN WOODLAWN

Woodlawn is one of the original WeTHRIVE! communities that joined the movement in 2009.

In 2022, WeTHRIVE! in Woodlawn:

- Held 12 meetings.
- Hosted a Heart-to-Heart walk sponsored in part by local businesses to help increase residents' knowledge of heart health.
- Miss Mary's Community Garden was moved to it's new spot along Grove Rd.
- The first ever Woodlawn Farmer's Market was held at the Woodlawn Recreation Center.
- The team tabled at Forest Park's Donate Life Event.

The Woodlawn WeTHRIVE! team is looking forward to continuing their work from 2022.

We THRIVE!

Community Wellness in Action

CONTACT US

WeTHRIVE!
250 William Howard Taft Rd
Cincinnati, Ohio 45219
(513) 946.7800

www.WatchUsThrive.org

WE'RE SOCIAL!

Follow us on your favorite social media platform



@WATCHUSTHRIVE

Use the QR Code below for additional information about the data in this report.

