

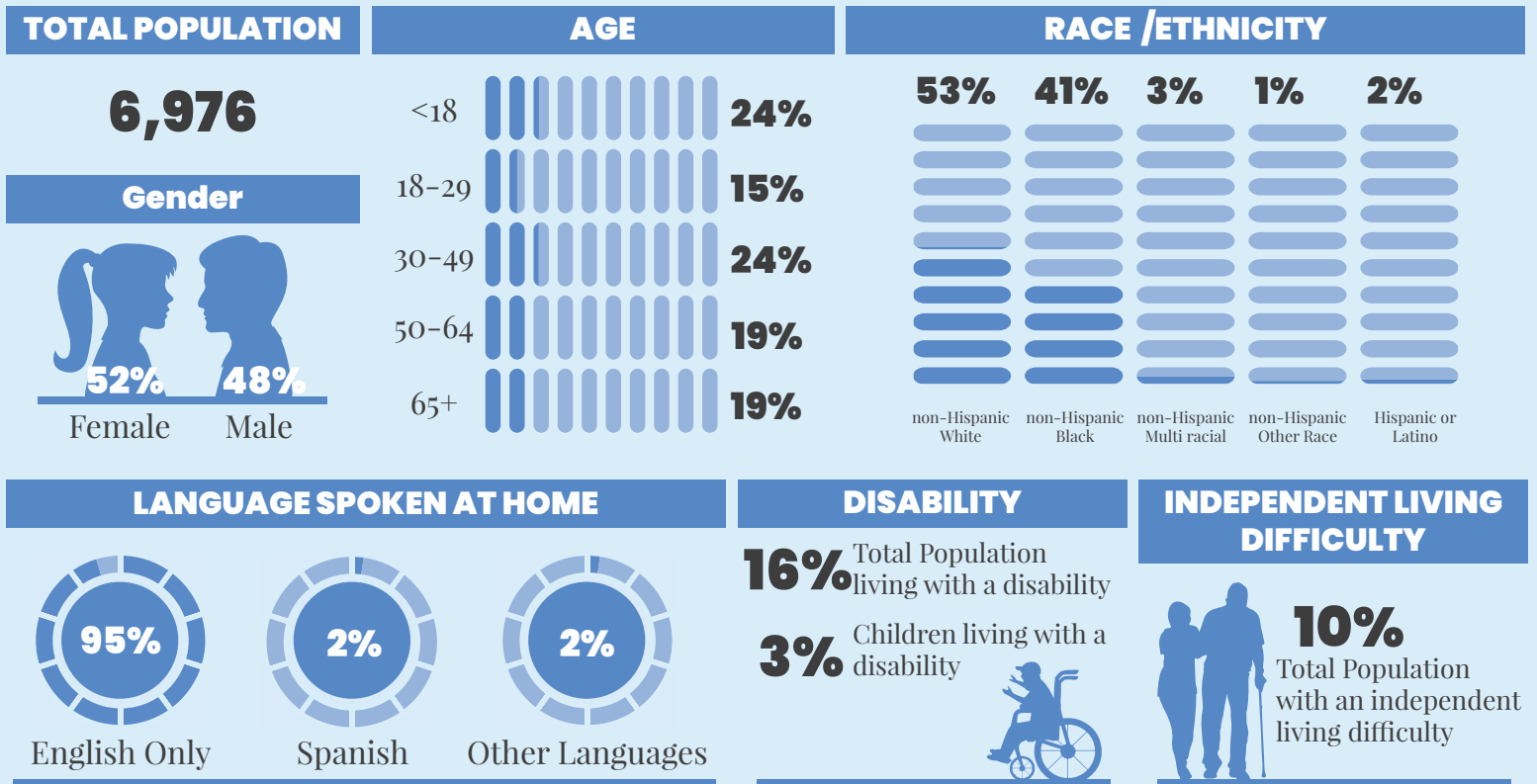
# WeTHRIVE!<sup>SM</sup> Data Profile

# MT. HEALTHY

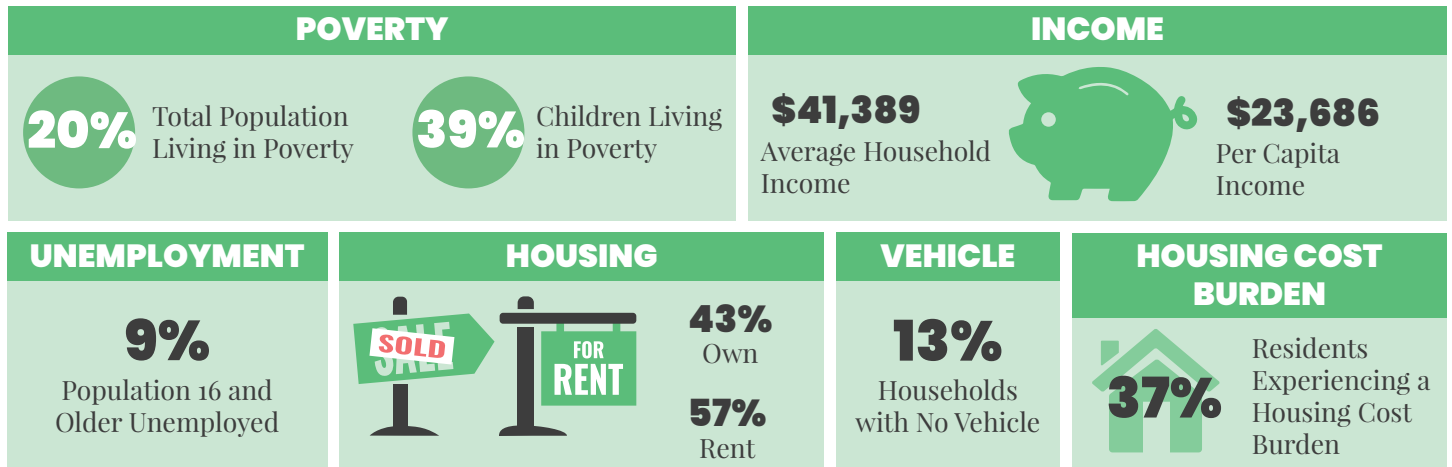
• 2023 •



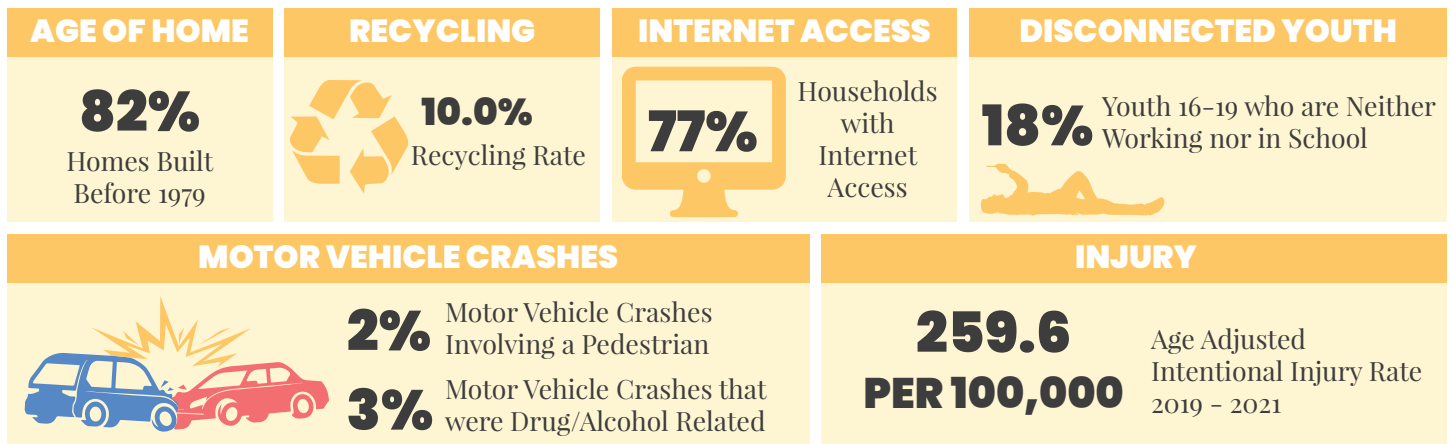
## DEMOGRAPHICS | 2021



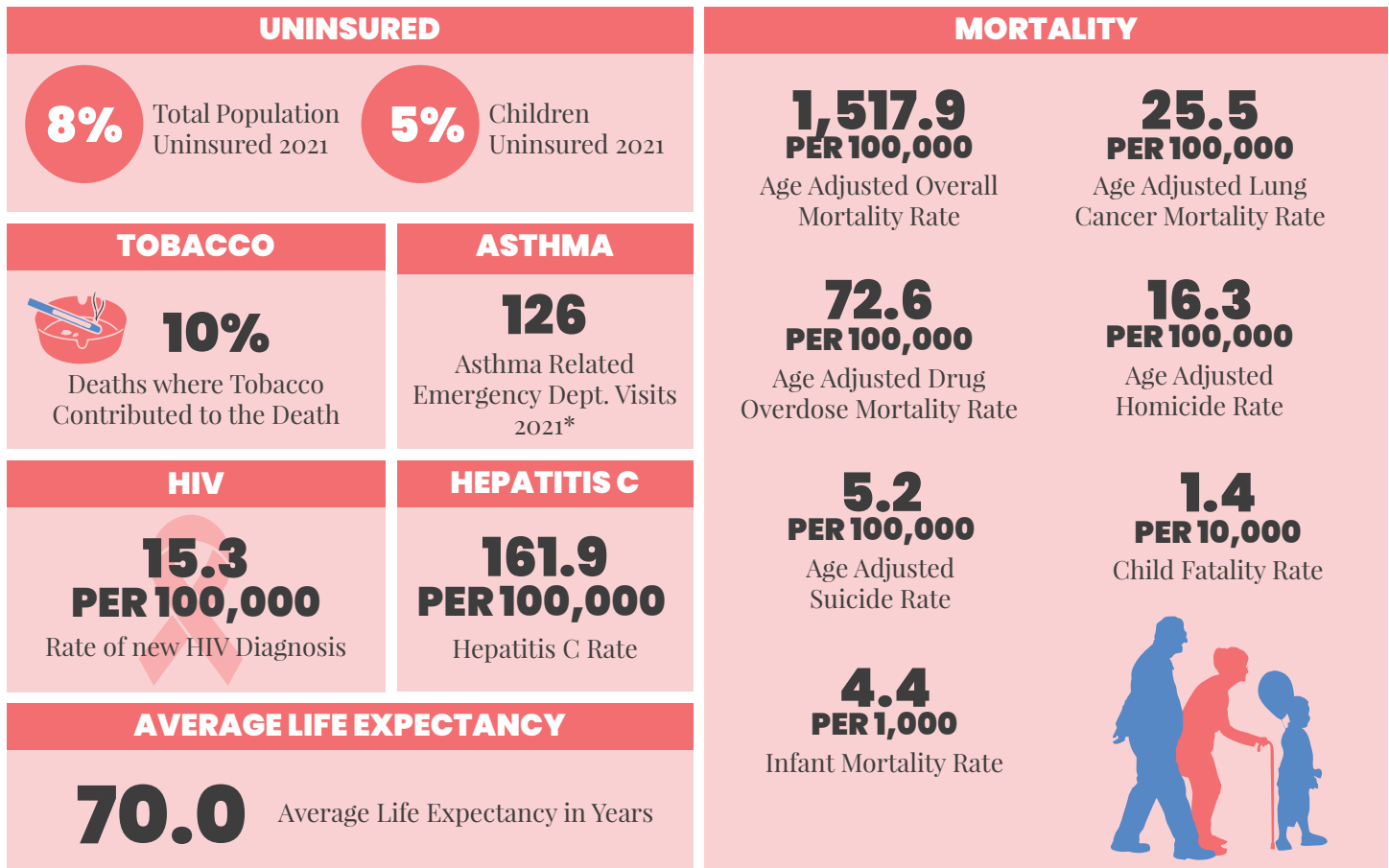
## ECONOMIC STABILITY | 2021



## NEIGHBORHOOD & BUILT ENVIRONMENT | 2021



## HEALTHCARE & HEALTH OUTCOMES | 2017–2021



\*NOTE | This is data for ZIP codes that cover Mt. Healthy. These ZIP codes are: 45242, 45249

## WeTHRIVE! IN MT. HEALTHY

The City of Mt. Healthy was recognized in 2022 as being a WeTHRIVE! community for 8 years.

In 2022, WeTHRIVE! in Mt. Healthy:

- Held eleven team meetings
- Continued supporting food access, overdose response, and community engagement strategies
- Began working on the HEAL Active Transportation Grant
- Completed two focus area assessments – Social and Community Context & Pedestrian, Bicycle, and Motor Vehicle Safety

The Mt. Healthy WeTHRIVE! team is looking forward to continuing their work from 2022 and exploring a new focus area in 2023.

# We THRIVE!

*Community Wellness in Action*

## CONTACT US

WeTHRIVE!  
250 William Howard Taft Rd  
Cincinnati, Ohio 45219  
(513) 946.7800

[www.WatchUsThrive.org](http://www.WatchUsThrive.org)

## WE'RE SOCIAL!

Follow us on your favorite social media platform



**@WATCHUSTHRIVE**

Use the QR Code below for additional information about the data in this report.

