

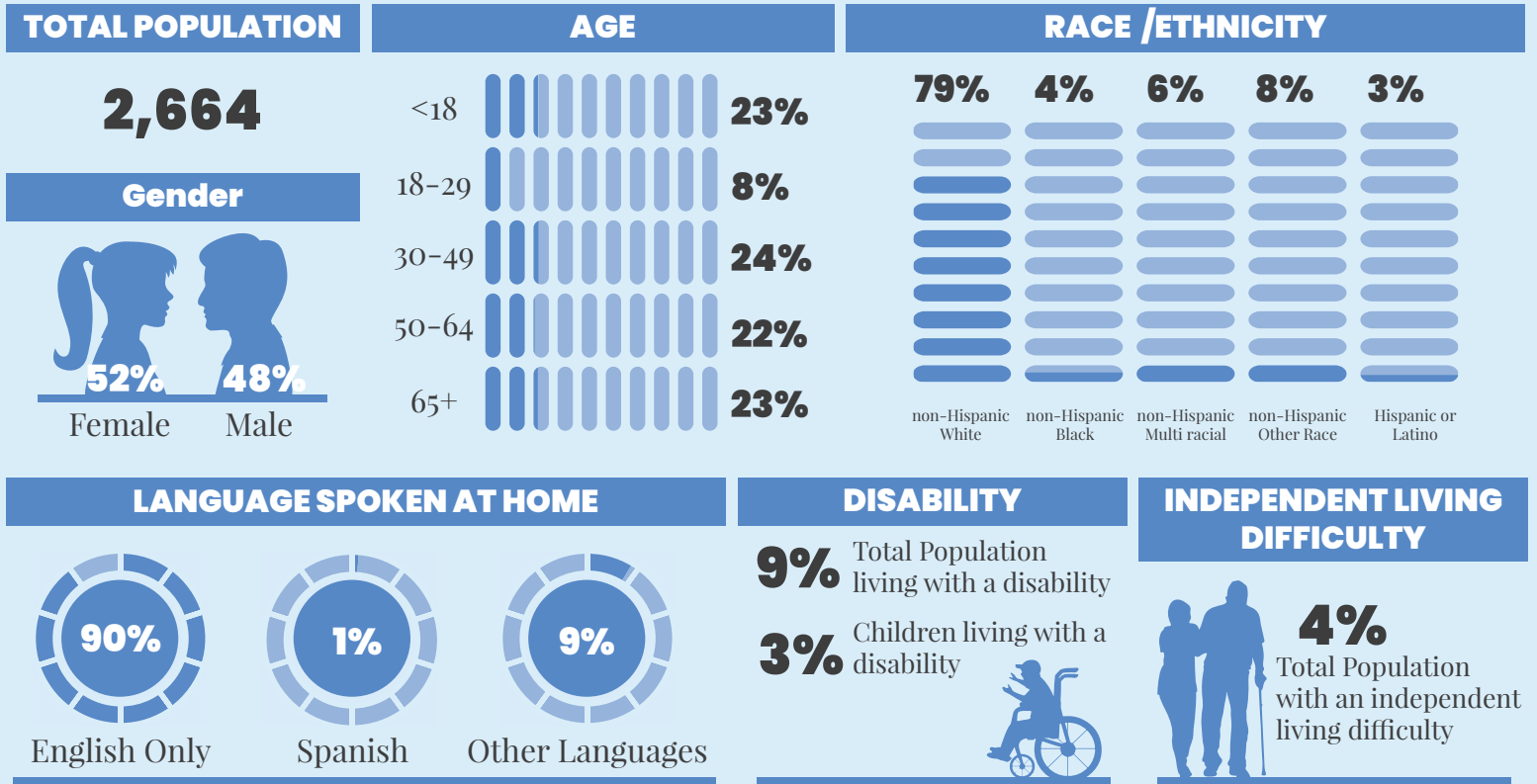
WeTHRIVE!SM Data Profile

EVENDALE

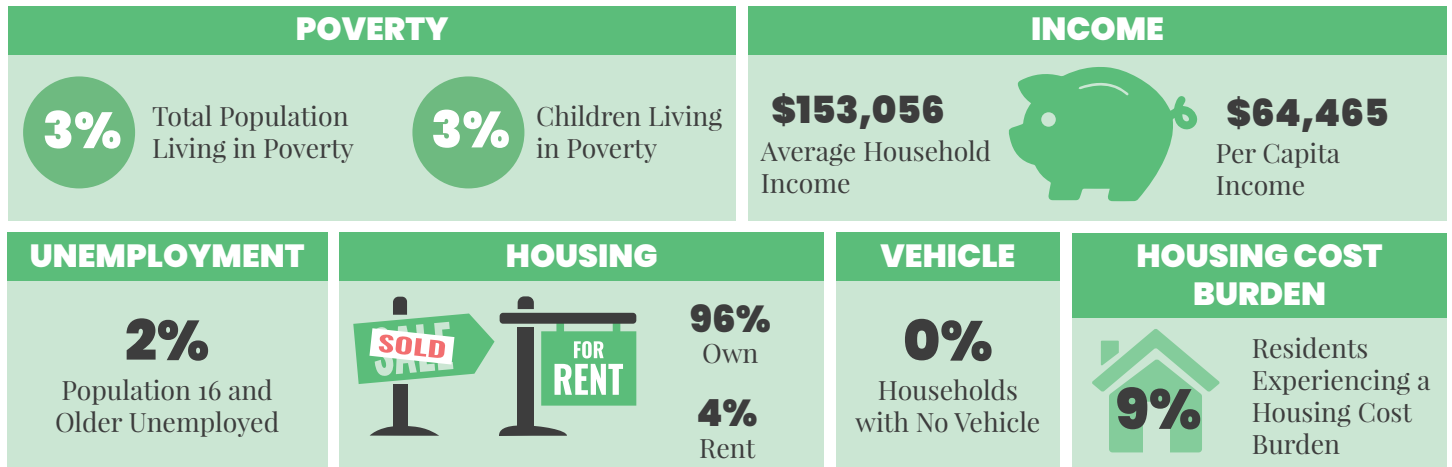
• 2023 •



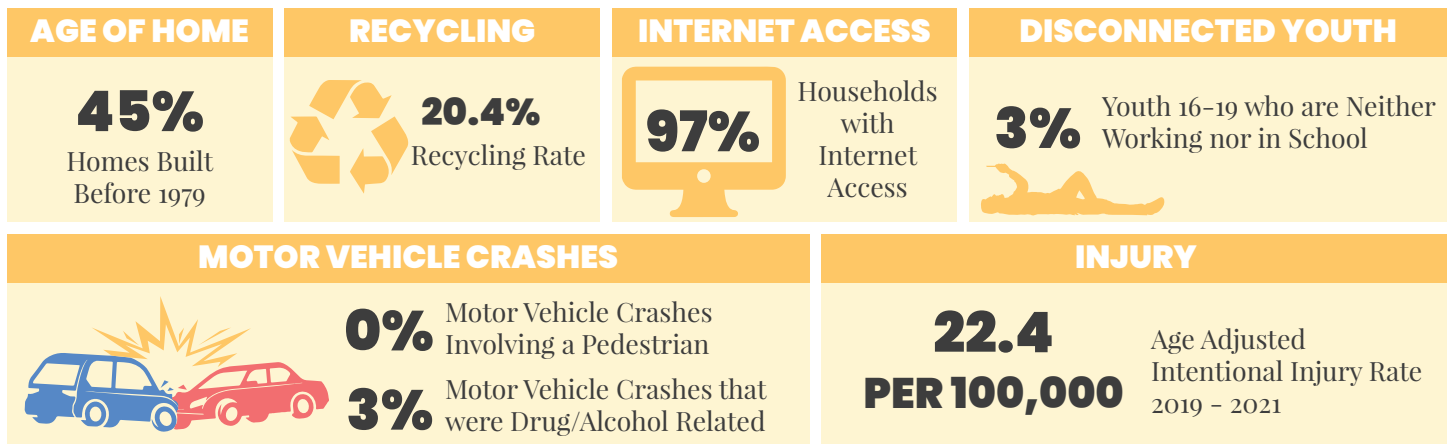
DEMOGRAPHICS | 2021



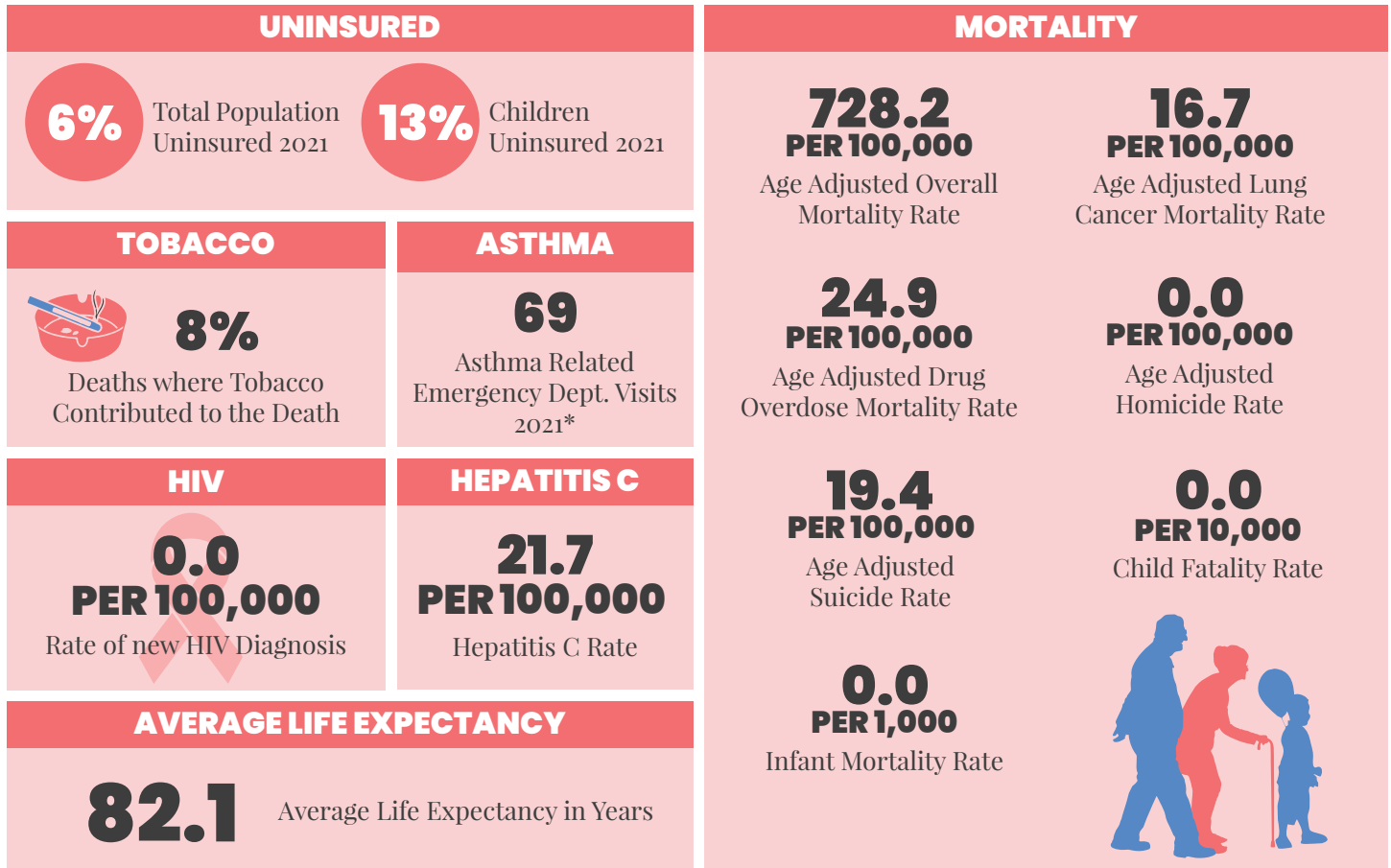
ECONOMIC STABILITY | 2021



NEIGHBORHOOD & BUILT ENVIRONMENT | 2021



HEALTHCARE & HEALTH OUTCOMES | 2017–2021



*NOTE | This data is ZIP codes that cover Evendale. These ZIP codes are: 45215, 45241

WeTHRIVE! IN EVENDALE

Evendale has been a WeTHRIVE! community since 2013.

Past projects include:

- Annual Community Recycling Day
- Evendale Trail Map
- Designated breastfeeding space at Recreation Center
- Tobacco-free policy (village buildings, pool, and tennis courts)
- Travel Plan for Safe Routes to School (Evendale Elementary)
- Healthy concessions at village swimming pool
- Tucker Tough Halloween Walk

We look forward to reconnecting with the team and adding to the this list in 2023.

We THRIVE!

Community Wellness in Action

CONTACT US

WeTHRIVE!
250 William Howard Taft Rd
Cincinnati, Ohio 45219
(513) 946.7800

www.WatchUsThrive.org

WE'RE SOCIAL!

Follow us on your favorite social media platform



@WATCHUSTHRIVE

Use the QR Code below for additional information about the data in this report.

