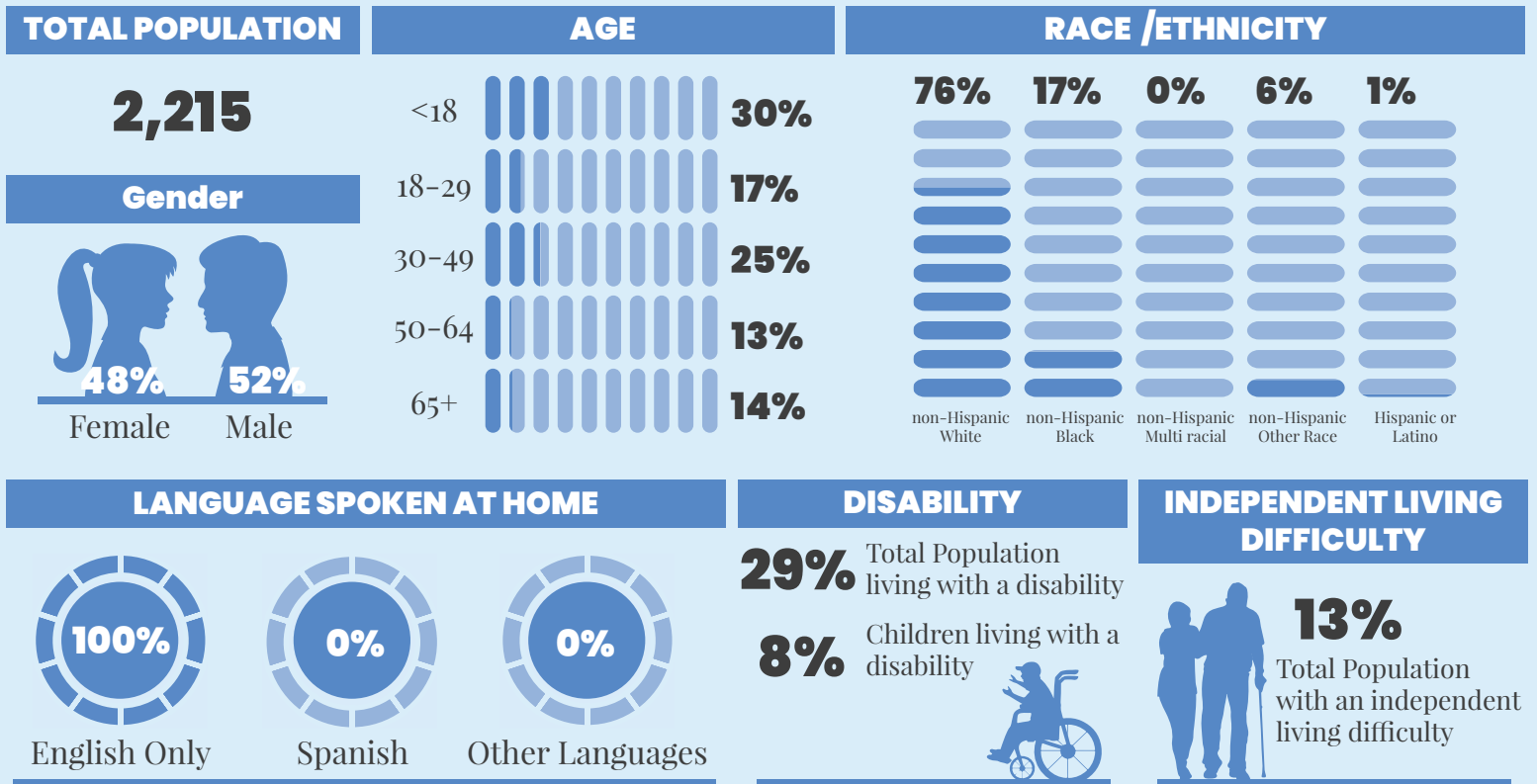


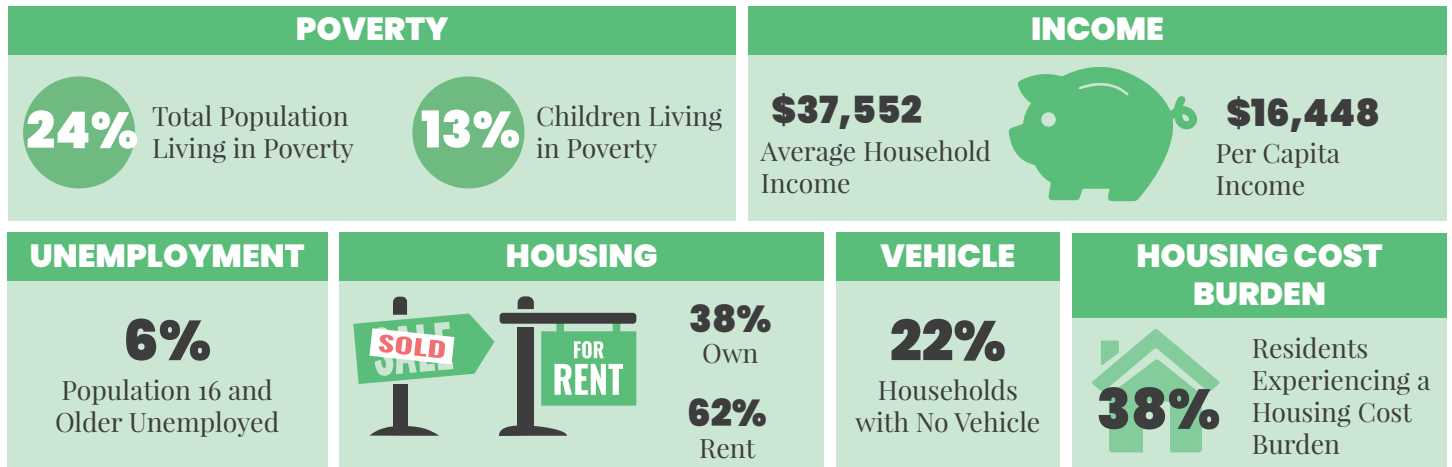
ELMWOOD PLACE

• 2023 •

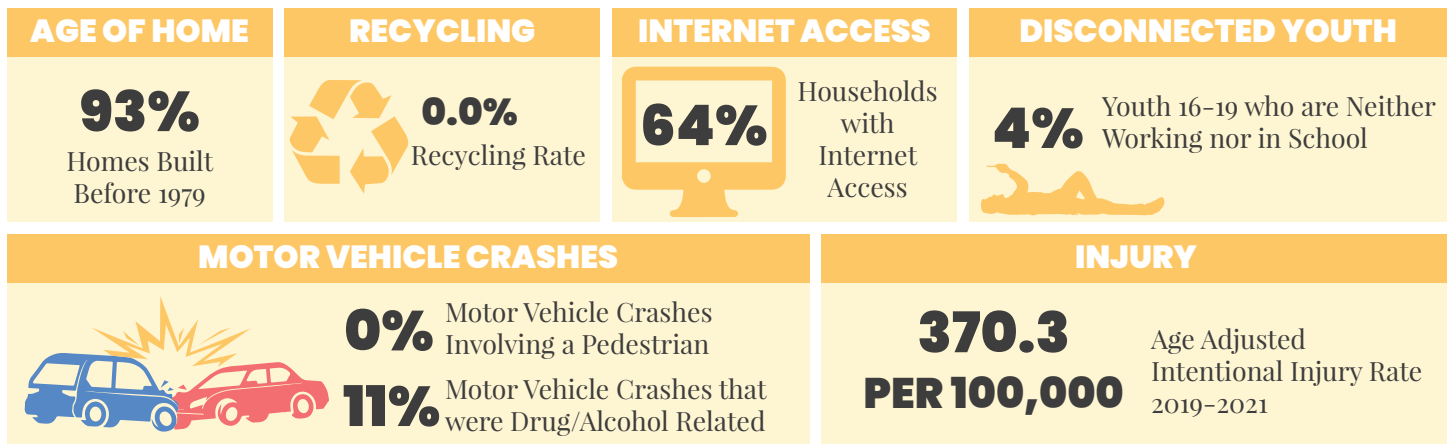
DEMOGRAPHICS | 2021



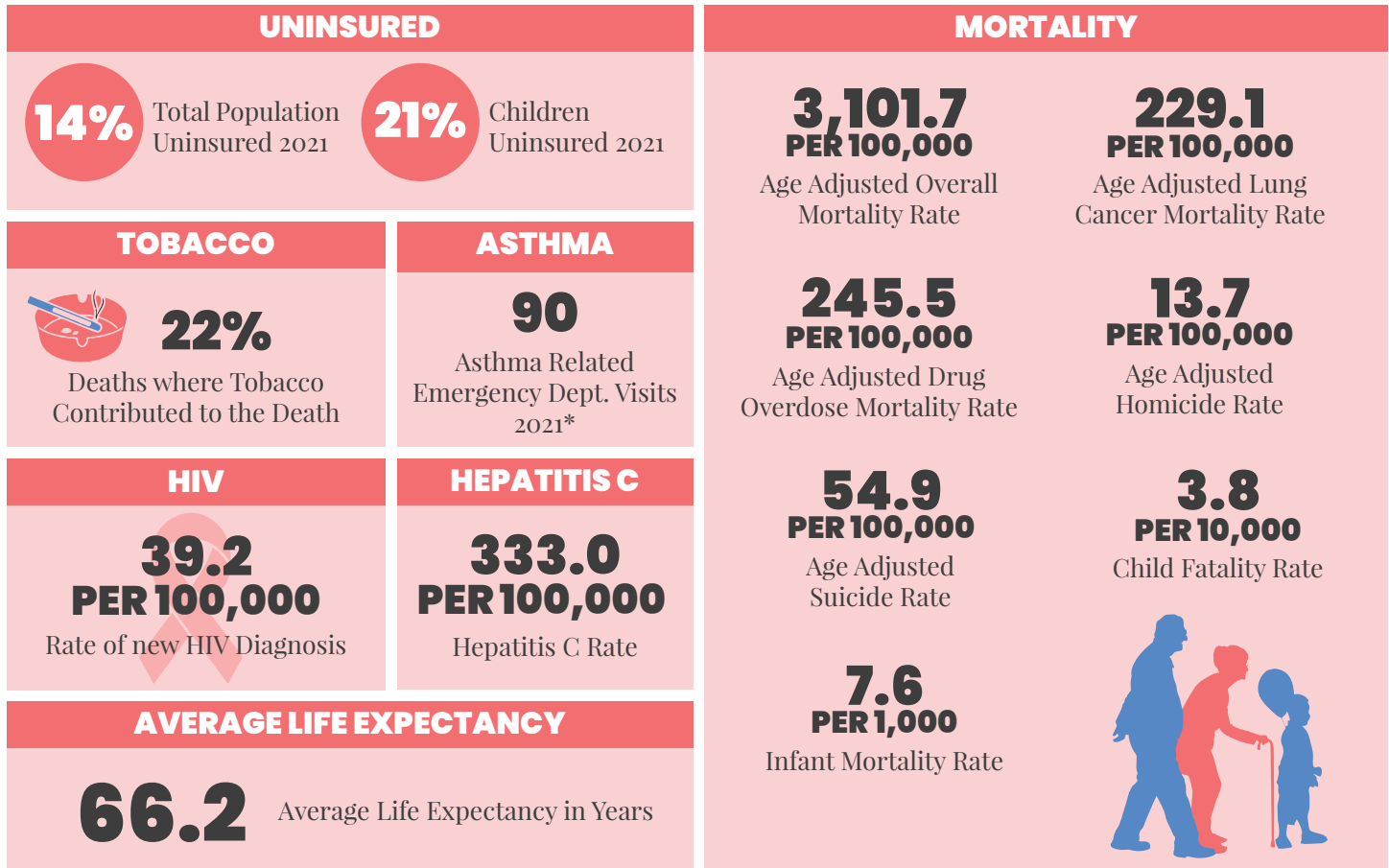
ECONOMIC STABILITY | 2021



NEIGHBORHOOD & BUILT ENVIRONMENT | 2021



HEALTHCARE & HEALTH OUTCOMES | 2017–2021



*NOTE | This data is ZIP codes that cover Elmwood Place. These ZIP codes are: 45216, 45232

WeTHRIVE! IN ELMWOOD PLACE

Elmwood Place became a WeTHRIVE! Community in 2021 and has been recognized for 2 years of active participation in the initiative.

In 2022:

- Team members had 8 one-on-one meetings with WeTHRIVE! staff and 2 full team meetings.
- The team supported Hamilton County Public Health in writing and presenting a Community Health Assessment.

The team is focusing on mental health, substance use, and physical activity in 2023.

We THRIVE!

Community Wellness in Action

CONTACT US

WeTHRIVE!
250 William Howard Taft Rd
Cincinnati, Ohio 45219
(513) 946.7800

www.WatchUsThrive.org

WE'RE SOCIAL!

Follow us on your favorite social media platform



@WATCHUSTHRIVE

Use the QR Code below for additional information about the data in this report.



PREVENT. PROMOTE. PROTECT.

